

# Health & Wellness

2023 COLLECTION



# Health <sup>2023</sup> Wellness

# Health & Wellness <sup>2023</sup>

6 ÷ 7 ITALIAN FAMILIES STORY

8 ÷ 9 TOTAL LOOK

## Health

12 CAMICI / COATS

24 **TENCEL™**

26 CASACCHE E PANTALONI COORDINATI TENCEL™  
*TENCEL™ MATCHING TUNICS AND PANTS*

42 **G-TECH PRO**

43 **SORONA®**

44 CASACCHE E PANTALONI COORDINATI G-TECH PRO  
*G-TECH PRO MATCHING TUNICS AND PANTS*

60 **LUXSATIN**

62 CASACCHE E PANTALONI COORDINATI LUXSATIN  
*LUXSATIN MATCHING TUNICS AND PANTS*

78 **100% COTONE**

80 CASACCHE E PANTALONI COORDINATI 100% COTONE  
*100% COTTON MATCHING TUNICS AND PANTS*

96 ACCESSORI / ACCESSORIES

## Wellness

104 **BIONIC FINISH®**

106 CASACCHE BIONIC FINISH®  
*BIONIC FINISH® TUNICS*

120 **FRESH & STRETCH**

122 CASACCHE FRESH & STRETCH  
*FRESH & STRETCH TUNICS*

192 ÷ 199 TESSUTI, LAVAGGI E CONSIGLI TECNICI  
*FABRICS, WASHING SYMBOLS AND TECHNICAL ADVICES*

200 ÷ 223 CALZATURE  
*SHOES*

224 ÷ 225 PUNTI VENDITA / DISTRIBUTORI  
*SHOPS / DEALERS*

226 ÷ 227 INDICE ALFABETICO PRODOTTI  
*ALPHABETICAL INDEX OF PRODUCTS*

# Health <sup>2023</sup> & Wellness



ABBIGLIAMENTO  
CLOTHING

LUXSATIN



LUXSATIN



## DIVA

### Dettagli / Details

- 3 tasche
- Bottoni a pressione
- Polsino con bottone automatico
- Martingala

- 3 pockets
- Press studs
- Cuff with press stud
- Half belt on the back

### Taglie / Sizes

XS ÷ 4XL Slim Fit

Art. 11P03R82 CeXrmb™ CeVIX

00 Bianco / White 50,60€

### Tessuto / Fabric

50% cotone 50% poliestere  
50% cotton 50% polyester  
180 g / m<sup>2</sup>



## SAM

### Dettagli / Details

- 3 tasche
- Bottoni a pressione
- Polsino con bottone automatico
- Martingala con automatici
- Spacco

- 3 pockets
- Press studs
- Cuff with press stud
- Half belt with press studs
- Vent

### Taglie / Sizes

S ÷ 5XL Slim Fit

Art. 11P03R34 CeXrmb™ CeVIX

00 Bianco / White 50,60€

### Tessuto / Fabric

50% cotone 50% poliestere  
50% cotton 50% polyester  
180 g / m<sup>2</sup>





## ETHAN

### Dettagli / Details

- 3 tasche
- Polsino con bottone
- Martingala

- 3 pockets
- Cuff with button
- Half belt on the back

### Taglie / Sizes

XS ÷ XXXL Regular Fit

CeXrmb " " CeVX

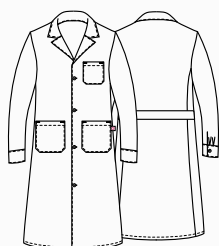
27,50€

**Art. 10M1315**

00 Bianco / White

### Tessuto / Fabric

100% cotone  
100% cotton  
185 g / m<sup>2</sup>



## SIMONA

### Dettagli / Details

- 3 tasche
- Polsino con bottone
- Martingala

- 3 pockets
- Cuff with button
- Half belt on the back

### Taglie / Sizes

XS ÷ XXXL Regular Fit

CeXrmb " " CeVX

27,50€

**Art. 10M1320**

00 Bianco / White

### Tessuto / Fabric

100% cotone  
100% cotton  
185 g / m<sup>2</sup>





## ARNÒ

### Dettagli / Details

- 3 tasche
- Polsino con bottone
- Martingala regolabile
- Spacco

- 3 pockets
- Cuff with button
- Adjustable half belt
- Vent

### Taglie / Sizes

S ÷ XXXL Slim Fit

### Art. 15P03R661

00 Bianco / White

Tessuto / Fabric **CeXnmb™ CeWX**

100% cotone 55€  
100% cotton  
170 g / m<sup>2</sup>



## IRIS

### Dettagli / Details

- 3 tasche
- Bottoni a pressione
- Polsino con bottone automatico
- Martingala

- 3 pockets
- Press studs
- Cuff with press stud
- Half belt on the back

### Taglie / Sizes

XS ÷ XXXL Regular Fit

### Art. 1870

00 Bianco / White 47,30€

**CeXnmb™ CeWX**

Tessuto / Fabric

100% cotone  
100% cotton  
170 g / m<sup>2</sup>





## CAMILLO

### Dettagli / Details

- 3 tasche
- Abbottonatura nascosta con automatici
- Polsino con elastico

- 3 pockets
- Concealed buttoning with press studs
- Cuff with elastic band

### Taglie / Sizes

S ÷ XXXL Regular Fit

CeXrmb " " CeVX

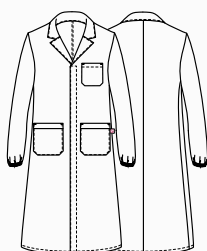
28,60€

**Art. 16P03R834**

00 Bianco / White

### Tessuto / Fabric

100% cotone  
100% cotton  
185 g / m<sup>2</sup>



## JANETA

### Dettagli / Details

- 3 tasche
- Abbottonatura nascosta con automatici
- Polsino con elastico

- 3 pockets
- Concealed buttoning with press studs
- Cuff with elastic band

### Taglie / Sizes

XS ÷ XXXL Regular Fit

CeXrmb " " CeVX

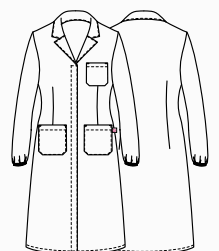
28,60€

**Art. 16P03R835**

00 Bianco / White

### Tessuto / Fabric

100% cotone  
100% cotton  
185 g / m<sup>2</sup>







## MIKE

### Dettagli / Details

- 3 tasche
- Abbottonatura con automatici
- Polsino con elastico

- 3 pockets
- Buttoning with press studs
- Cuff with elastic band

### Taglie / Sizes

XS ÷ 4XL Regular Fit

CeXnmb " " CeVX

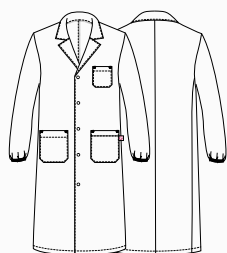
18,70€

**Art. Q3R00247**

C01 Bianco / White

### Tessuto / Fabric

100% cotone  
100% cotton  
185 g / m<sup>2</sup>



## MILLY

### Dettagli / Details

- 3 tasche
- Abbottonatura con automatici
- Polsino con elastico

- 3 pockets
- Buttoning with press studs
- Cuff with elastic band

### Taglie / Sizes

XS ÷ XXXL Regular Fit

CeXnmb " " CeVX

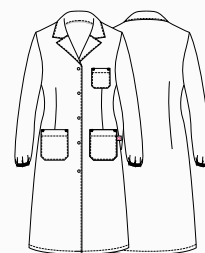
18,70€

**Art. Q3R00248**

C01 Bianco / White

### Tessuto / Fabric

100% cotone  
100% cotton  
185 g / m<sup>2</sup>





## TRISTANO

### Dettagli / Details

- 3 tasche
- Polsino con elastico
- Abbottonatura nascosta con bottoni 4 fori

- 3 pockets
- Cuff with elastic band
- Concealed buttoning with 4-hole buttons

### Taglie / Sizes

S ÷ 4XL Slim Fit

CeXnmb " " CeVX

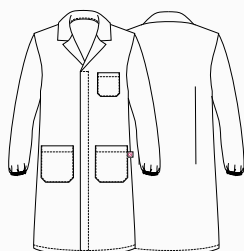
23,10€

**Art. Q3R00261**

C01 Bianco / White

### Tessuto / Fabric

100% cotone  
100% cotton  
185 g / m<sup>2</sup>



## ISOTTA

### Dettagli / Details

- 3 tasche
- Polsino con elastico
- Abbottonatura nascosta con bottoni 4 fori

- 3 pockets
- Cuff with elastic band
- Concealed buttoning with 4-hole buttons

### Taglie / Sizes

XS ÷ XXXL Regular Fit

CeXnmb " " CeVX

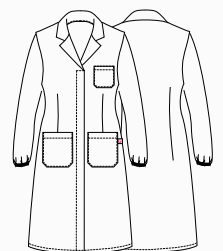
23,10€

**Art. Q3R00262**

C01 Bianco / White

### Tessuto / Fabric

100% cotone  
100% cotton  
185 g / m<sup>2</sup>



## health & wellness

Casacche

Tunics

# NINA

### Dettagli / Details

- 2 tasche
- Abbottonatura con automatici
- 2 spacchetti laterali

- 2 pockets
- Buttoning with press studs
- 2 side vents

### Taglie / Sizes

XS ÷ 4XL Regular Fit

CeXmb™ · CeVX

31,90€

Art. 21P03K245

00 Bianco / White

### Tessuto / Fabric

100% cotone

100% cotton

185 g / m<sup>2</sup>





## EDOARDO

### Dettagli / Details

- 2 tasche
- Abbottonatura nascosta con automatici
- Inserti in rete
- Taschino sul petto

- 2 pockets
- Concealed buttoning with press studs
- Network fabric panels
- Breast pocket

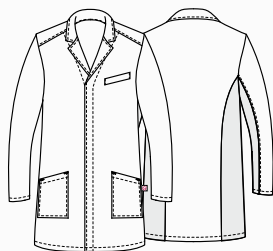
### Taglie / Sizes

S ÷ 4XL Slim Fit

### Art. 21P03R243

00 Bianco / White

Tessuto / Fabric **CeXnmb**™ **CeVX**  
100% cotone 34,10€  
100% cotton  
185 g / m<sup>2</sup>



## GINEVRA

### Dettagli / Details

- 2 tasche - Inserti in rete
- Abbottonatura nascosta con automatici
- 2 spacchetti laterali
- Taschino sul petto

- 2 pockets - Network fabric panels
- Concealed buttoning with press studs
- 2 side vents
- Breast pocket

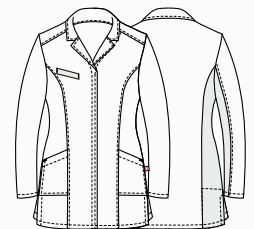
### Taglie / Sizes

XS ÷ XXXL Regular Fit

### Art. 21P03R244

00 Bianco / White

Tessuto / Fabric **CeXnmb**™ **CeVX**  
100% cotone 34,10€  
100% cotton  
185 g / m<sup>2</sup>



LUXSATIN



## MARTA

### Dettagli / Details

- 2 tasche
- Taschino sul petto
- Abbottonatura nascosta con automatici

- 2 pockets
- Breast pocket
- Concealed buttoning with press studs

### Taglie / Sizes

XS ÷ XXXL Slim Fit

CeXrmb " " CeVX

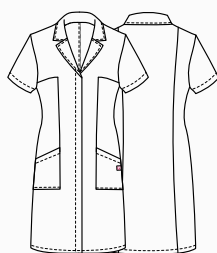
40,70€

**Art. 17P03R977**

00 Bianco / White

### Tessuto / Fabric

50% cotone 50% poliestere  
50% cotton 50% polyester  
180 g / m<sup>2</sup>



LUXSATIN



## MARZIA

### Dettagli / Details

- 2 tasche - Taschino sul petto
- Abbottonatura nascosta con automatici
- Polsino con bottone a pressione

- 2 pockets - Breast pocket
- Concealed buttoning with press studs
- Cuff with press stud

### Taglie / Sizes

XS ÷ XXXL Slim Fit

CeXrmb " " CeVX

44€

**Art. 19P03R123**

00 Bianco / White

### Tessuto / Fabric

50% cotone 50% poliestere  
50% cotton 50% polyester  
180 g / m<sup>2</sup>





## ALESSIA

### Dettagli / Details

- 2 tasche
- Abbottonatura nascosta con automatici
- Taschino sul petto
- Polsino con bottone a pressione

- 2 pockets
- Concealed buttoning with press studs
- Breast pocket
- Cuff with press stud

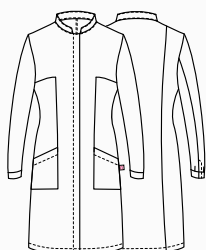
### Taglie / Sizes

XS ÷ XXXL Slim Fit

**Art. 16P03R837** *CeXmb™ CeVX*  
00 Bianco / White 49,50€

### Tessuto / Fabric

50% lyocell 50% poliestere  
50% lyocell 50% polyester  
180 g / m<sup>2</sup>



## ROCCO

### Dettagli / Details

- 2 tasche - Taschino sul petto
- Abbottonatura nascosta con automatici
- Spacco

- 2 pockets - Breast pocket
- Concealed buttoning with press studs
- Vent

### Taglie / Sizes

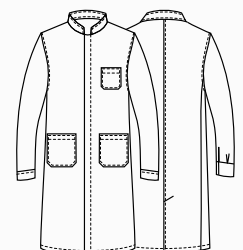
S ÷ XXXL Slim Fit

*CeXmb™ CeVX*  
50,80€

**Art. 19P03R122**  
00 Bianco / White

### Tessuto / Fabric

50% lyocell 50% poliestere  
50% lyocell 50% polyester  
180 g / m<sup>2</sup>



# LINA

## Dettagli / Details

- 2 tasche
- Taschino portapenne

- 2 pockets
- Pen pocket

## Taglie / Sizes

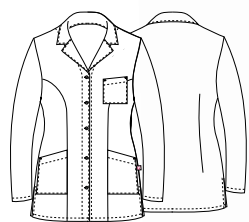
XS ÷ XXL Regular Fit

## Art. 682

00 Bianco / White

## Tessuto / Fabric

100% cotone  
100% cotton  
185 g / m<sup>2</sup>



# CHIARA

## Dettagli / Details

- 2 tasche
- 2 spacchetti dietro
- Abbottonatura nascosta con automatici

- 2 pockets

- 2 rear vents

- Concealed buttoning with press studs

## Taglie / Sizes

XS ÷ XXXL Slim Fit

CeXmb " " CeVX

47,30€

**Art. 20P02K199**

00 Bianco / White

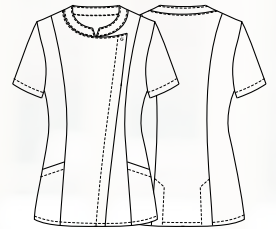
000 Nero / Black

## Tessuto / Fabric

62% cotone 35% poliestere 3% elastan

62% cotton 35% polyester 3% elastane

180 g / m<sup>2</sup>



COMFORT

COMFORT



**Art. 20P02K199**

000 Nero / Black

**Art. 20P02K199**

00 Bianco / White





Feels so right

**ECOSOSTENIBILE / ECO FRIENDLY**  
**STIRO FACILE / EASY CARE**  
**TRASPIRANTE / BREATHABLE**  
**INDANTHRENE**



## DALLA FORESTA ALLA PRODUZIONE

Conosciute per il loro comfort naturale e per il processo di produzione rispettoso per l'ambiente, le fibre **TENCEL™** Lyocell offrono qualità, performance e versatilità. Proprietà fisiche uniche gli conferiscono alta resistenza, eccellente gestione dell'umidità e delicatezza sulla pelle.

## PRODUZIONE SOSTENIBILE

Le fibre **TENCEL™** Lyocell si sono guadagnate la loro reputazione grazie al processo di produzione a ciclo chiuso rispettoso per l'ambiente, che trasforma la polpa del legno in fibra di cellulosa con alta efficienza delle risorse e un basso impatto ambientale.

La speciale fibra, di origine botanica viene estratta da legno proveniente da piantagioni forestali sostenibili, utilizzando un solvente riciclato quasi al 100%.

Grazie ai microscopici canali tra le singole fibre, **TENCEL™ assorbe fino al 50% di umidità in più rispetto al cotone**, riducendo drasticamente la formazione di batteri. Lasciando la pelle piacevolmente asciutta e mantenendo il suo naturale equilibrio, questa fibra evita lo sviluppo di irritazioni.

I tessuti contenenti la fibra **TENCEL™**, sono caratterizzati da un'altissima stabilità dimensionale, si dimostrano **eccezionalmente forti e resistenti all'usura**, e sono adatti ai lavaggi industriali. Grazie all'insieme di queste eccellenti caratteristiche, **TENCEL™** può essere considerata la fibra del futuro.

Scopri di più a pagina 194 / Find out more on page 194

## FROM THE FOREST TO PRODUCTION

*Known for their natural comfort and environmentally friendly production process, the **TENCEL™** Lyocell fibers offer quality, performance and versatility. Unique physical properties give it high strength, excellent moisture management and delicacy on the skin.*

## SUSTAINABLE PRODUCTION

***TENCEL™** Lyocell fibers have gained a commendable reputation for their environmentally responsible closed loop production process, which transforms wood pulp into cellulosic fibers with high resource efficiency and low ecological impact.*

*This special fiber, of botanic origin, is extracted from sustainable forests, using an almost 100% recycled solvent.*

*Thanks to the microscopic channels between the individual fibers, **TENCEL™ absorbs up to 50% more of moisture than cotton**, reducing dramatically the growth of bacteria. Leaving the skin pleasantly dry and keeping its natural balance, this fiber prevents skin irritation.*

***TENCEL™** fibers are characterized by a very high dimensional stability, they prove to be **exceptionally strong and resistant to wear**, and are suitable for industrial washing. Thanks to all these characteristics, **TENCEL™** can be considered the fiber of the future.*

# GIULIANA

## Dettagli / Details

- 2 tasche
- Taschino portapenne
- Abbottonatura nascosta con automatici
- 2 spacchetti laterali

- 2 pockets
- Pen pocket
- Concealed buttoning with press studs
- 2 side vents

## Taglie / Sizes

XS ÷ XXXL Slim Fit

CeXmib™ CeVX

44€

**Art. 21P03K943**

00 Bianco / White

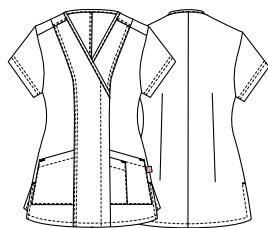
019 Grigio chiaro / Light grey

## Tessuto / Fabric

50% lyocell 50% poliestere

50% lyocell / 50% polyester

180 g / m<sup>2</sup>



019 Grigio chiaro / Light grey



PANTALONI COORDINABILI  
MATCHING PANTS  
pag. 36

# GIULIANA



## Dettagli / Details

- 2 tasche
- Taschino portapenne
- Abbottonatura nascosta con automatici
- 2 spacchetti laterali

- 2 pockets
- Pen pocket
- Concealed buttoning with press studs
- 2 side vents

## Taglie / Sizes

XS ÷ XXXL Slim Fit

CeXmb™ CeVX

44€

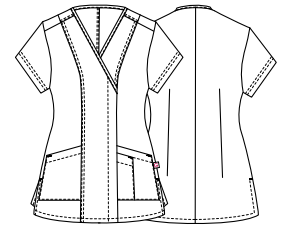
## Art. 17P03K943

004 Blu / Blue

029 Pistacchio / Pistachio

## Tessuto / Fabric

50% lyocell 50% poliestere  
50% lyocell 50% polyester  
180 g / m<sup>2</sup>



## PANTALONI COORDINABILI MATCHING PANTS

pag. 36



029 Pistacchio / Pistachio



# GIULIANO

## Dettagli / Details

- 2 tasche
- Taschino sul petto
- 2 spacchetti laterali

- 2 pockets
- Breast pocket
- 2 side vents

## Taglie / Sizes

S ÷ 4XL Slim Fit

CeXrnib™ CeVX

35,20€

**Art. 21P03K237**

00 Bianco / White

CeXrnib™ CeVX

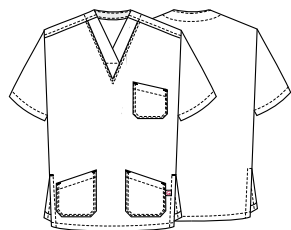
42,90€

**Art. 21P03K942**

019 Grigio chiaro / Light grey

## Tessuto / Fabric

50% lyocell 50% poliestere  
50% lyocell 50% polyester  
180 g / m<sup>2</sup>



**Art. 21P03K942**

019 Grigio chiaro / Light grey



PANTALONI COORDINABILI  
MATCHING PANTS  
pag. 37



# GIULIANO

**Dettagli / Details**

- 2 tasche
- Taschino sul petto
- 2 spacchetti laterali

- 2 pockets
- Breast pocket
- 2 side vents

**Taglie / Sizes**

S ÷ 4XL Slim Fit

**CeXmb™ CeWX**

38,50€

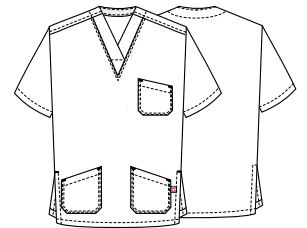
**Art. 17P03K942**

004 Blu / Blue

029 Pistacchio / Pistachio

**Tessuto / Fabric**

50% lyocell 50% poliestere  
50% lyocell 50% polyester  
180 g / m<sup>2</sup>



**PANTALONI COORDINABILI**

**MATCHING PANTS**

pag. 37



**Art. 17P03K942**

029 Pistacchio / Pistachio



# GIADA

## Dettagli / Details

- 2 tasche
- Taschino sul petto
- Abbottonatura nascosta con automatici
- Polsino in maglia
- Inserti in rete

- 2 pockets
- Breast pocket
- Concealed buttoning with press studs
- Knitted cuff
- Network fabric panels

## Taglie / Sizes

XS ÷ XXXL Slim Fit

CeXrmb™ CeVX

60,50€

### Art. 21P03K945

019 Grigio chiaro / Light grey

CeXrmb™ CeVX

60,50€

### Art. 17P03K945

00 Bianco / White

004 Blu / Blue

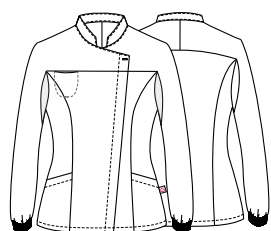
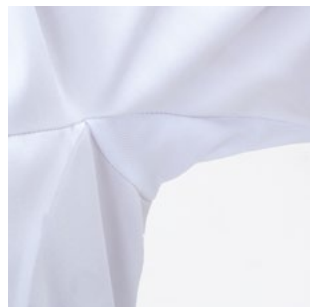
029 Pistacchio / Pistachio

## Tessuto / Fabric

50% lyocell 50% poliestere

50% lyocell 50% polyester

180 g / m<sup>2</sup>



PANTALONI COORDINABILI  
MATCHING PANTS

pag. 36



**Art. 21P03K945**  
019 Grigio chiaro / Light grey

 **Tencel™**  
Feels so right



**Art. 17P03K945**  
004 Blu / Blue

 **Tencel™**  
Feels so right



**Art. 17P03K945**  
029 Pistacchio / Pistachio

 **Tencel™**  
Feels so right



# SILVANO

## Dettagli / Details

- 2 tasche
- Taschino sul petto
- Abbottonatura nascosta con automatici
- Polsino in maglia
- Inserti in rete

- 2 pockets
- Breast pocket
- Concealed buttoning with press studs
- Knitted cuff
- Network fabric panels

## Taglie / Sizes

S ÷ 4XL Slim Fit

CeXnmb™ · CeVX

60,50€

### Art. 21P03K944

019 Grigio chiaro / Light grey

CeXnmb™ · CeVX

60,50€

### Art. 17P03K944

00 Bianco / White

004 Blu / Blue

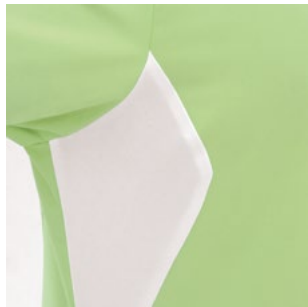
029 Pistacchio / Pistachio

## Tessuto / Fabric

50% lyocell 50% poliestere

50% lyocell 50% polyester

180 g / m<sup>2</sup>



PANTALONI COORDINABILI  
MATCHING PANTS  
pag. 37



**Art. 21P03K944**  
019 Grigio chiaro / Light grey

 **Tencel™**  
Feels so right



**Art. 17P03K944**  
004 Blu / Blue

 **Tencel™**  
Feels so right



**Art. 17P03K944**  
029 Pistacchio / Pistachio

 **Tencel™**  
Feels so right

# GIADA

## Dettagli / Details

- 2 tasche
- Taschino sul petto
- Abbottonatura nascosta con automatici
- Inserti in rete

- 2 pockets
- Breast pocket
- Concealed buttoning with press studs
- Network fabric panels

## Taglie / Sizes

XS ÷ XXXL Slim Fit

CeXmb™ CeVX

55€

### Art. 21P03K054

019 Grigio chiaro / Light grey

CeXmb™ CeVX

55€

### Art. 18P03K054

00 Bianco / White

004 Blu / Blue

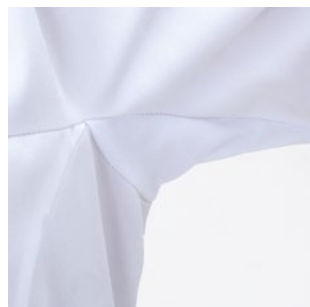
029 Pistacchio / Pistachio

## Tessuto / Fabric

50% lyocell 50% poliestere

50% lyocell 50% polyester

180 g / m<sup>2</sup>



PANTALONI COORDINABILI  
MATCHING PANTS  
pag. 36



**Art. 18P03K054**  
004 Blu / Blue

 **Tencel™**  
Feels so right



**Art. 21P03K054**  
019 Grigio chiaro / Light grey

 **Tencel™**  
Feels so right



**Art. 18P03K054**  
029 Pistacchio / Pistachio

 **Tencel™**  
Feels so right



 **Tencel™**  
Feels so right

 **Tencel™**  
Feels so right

 **Tencel™**  
Feels so right

## GIULIA

### Dettagli / Details

- 2 tasche
- Elastico nel fascione
- Passanti
- Fondo stretto
- Chiusura con zip

- 2 pockets
- Elasticated waistband
- Belt loops
- Slim leg
- Zip fly

### Taglie / Sizes

XS ÷ XXL Slim Fit

### Art. 17P03P948

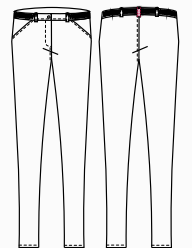
00 Bianco / White  
004 Blu / Blue  
029 Pistacchio / Pistachio

### Tessuto / Fabric

50% lyocell 50% poliestere  
50% lyocell 50% polyester  
180 g / m<sup>2</sup>

### CeXnmb™ CeWX

35,20€





**Tencel™**  
Feels so right



**Tencel™**  
Feels so right



**Tencel™**  
Feels so right

## ELIA

### Dettagli / Details

- 2 tasche
- 1 tascone laterale
- Elastico nel fascione
- Passanti
- Fondo stretto
- Chiusura con zip
- 2 pockets
- 1 side pocket
- Elasticated waistband
- Belt loops
- Slim leg
- Zip fly

### Taglie / Sizes

S ÷ XXXL Slim Fit

### Art. 17P03P947

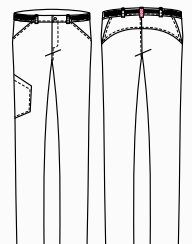
00 Bianco / White  
004 Blu / Blue  
029 Pistacchio / Pistachio

### Tessuto / Fabric

50% lyocell 50% poliestere  
50% lyocell 50% polyester  
180 g / m<sup>2</sup>

### CeXmb™ CeVX

39,60€



## health & wellness

Casacche

Tunics

# MARCO

### Dettagli / Details

- 2 tasche
- Taschino sul petto
- 2 spacchetti laterali
- Abbottonatura nascosta con automatici

- 2 pockets
- Breast pocket
- 2 side vents
- Concealed buttoning with press studs

### Taglie / Sizes

S ÷ 4XL Slim Fit

CeXmb™ CeVX

45,65€

**Art. 23P03K325**

00 Bianco / White

000 Nero / Black

### Tessuto / Fabric

48% lyocell 48% poliestere 4% elasthan

48% lyocell 48% polyester 4% elastane

185 g / m<sup>2</sup>



**Art. 23P03K325**

000 Nero / Black

# MIRIAM

## Dettagli / Details

- 2 tasche
- Taschino sul petto
- 2 spacchetti laterali
- Abbottonatura nascosta con automatici

- 2 pockets

- Breast pocket

- 2 side vents

- Concealed buttoning with press studs

## Taglie / Sizes

XS ÷ XXXL Slim Fit

CeXmb " " CeVX

45,65€

## Art. 23P03K326

000 Nero / Black

00 Bianco / White

## Tessuto / Fabric

48% poliestere 48% lyocell 4% elasthan

48% polyester 48% lyocell 4% elastane

185 g / m<sup>2</sup>



Tencel™  
Feels so right

COMFORT



## Art. 23P03K326

00 Bianco / White





## JACKIE

### Dettagli / Details

- Pantaloni unisex
- 2 tasche
- 2 tasche sul retro
- Chiusura zip
- Elastico in vita
- Passanti cintura
  
- Unisex pants
- 2 pockets
- 2 rear pockets
- Zip fly
- Elasticated waistband
- Belt loops

### Taglie / Sizes

XS ÷ 4XL Slim Fit

### Art. 23P03P335

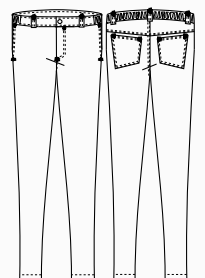
00 Bianco / White  
000 Nero / Black

### Tessuto / Fabric

48% lyocell 48% poliestere 4% elasthan  
48% lyocell 48% polyester 4% elastane  
185 g / m<sup>2</sup>

### CeXnmb " " CeVX

47,30€





# G-TECHPRO

**TESSUTO ESCLUSIVO CON FINISSAGGIO AL GRAFENE**  
**EXCLUSIVE FABRIC WITH GRAPHENE FINISHING**

Scopri di più a pagina 192 / Find out more on page 192

**FRESCO AL  
TATTO**



**FRESH TOUCH**

**ANTIBATTERICO  
E ANTIODORE**



**ANTIBACTERIAL  
AND ANTI-ODOUR**

**ANTIVIRALE  
E ANTIMICOTICO**



**ANTIVIRAL  
AND ANTIMYCOTIC**

**ANTISTATICO**



**ANTISTATIC**

**PROTEZIONE SOLARE UV**



**UV RAYS PROTECTION**

**CONTROLLO DELL'UMIDITÀ**



**MOISTURE MANAGEMENT**



LOOK GOOD. FEEL GOOD. DO GOOD.

### SORONA® DALLA CULTURA ALLA FIBRA

Composta per il 37% da ingredienti vegetali, la fibra **Sorona®** aiuta a ridurre il nostro impatto sull'ambiente creando capi confortevoli e duraturi.

La struttura a spirale del polimero **Sorona®** crea performance uniche. Le sue fibre forniscono morbidezza, elasticità meccanica e recupero eccezionali in qualsiasi ambiente, senza l'utilizzo dello spandex. Il polimero **Sorona®** è prodotto con **BIO-PDO**, elemento costitutivo che trasforma un processo chimico in un processo eco-efficiente.

ECOSOSTENIBILE / ECO FRIENDLY

TRASPIRANTE / BREATHABLE

CONFORTEVOLE / COMFORTABLE

### SORONA® FROM CROP TO FIBRE

*Made up of 37% plant-based ingredients, **Sorona®** fibres help reduce our environmental impact creating comfortable, long-lasting garments.*

*The kinked structure of the **Sorona®** polymer allows unique performances. Its fibres provide exceptional softness, mechanical stretch and recovery in any environment, without using spandex.*

*The **Sorona®** polymer is made with **BIO-PDO**, a building block that turns a chemical process into an eco-efficient one.*

Scopri di più a pagina 193 / Find out more on page 193



## health & wellness

Casacche

Tunics

# FLAVIO

### Dettagli / Details

- 2 tasche
- Taschino sul petto
- 2 spacchetti laterali

- 2 pockets
- Breast pocket
- 2 side vents

### Taglie / Sizes

S ÷ 4XL Slim Fit

CeXmb " " CeVX

33€

### Art. 23P03K329

00 Bianco / White

013 Fucsia / Fuchsia

213 Prugna / Purple

118 Azzurro / Light blue

214 Petrolio / Petroleum blue

004 Blu / Blue

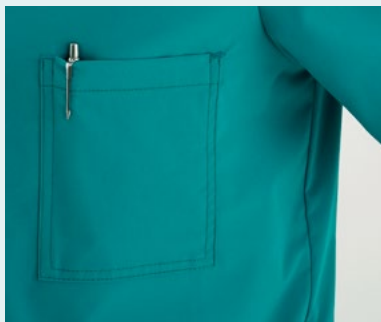
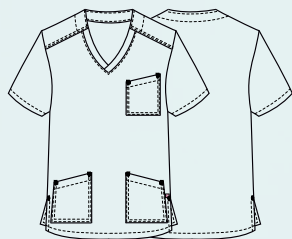
000 Nero / Black

### Tessuto / Fabric

100% poliestere

100% polyester

108 g / m<sup>2</sup>



sorona<sup>®</sup>  
AGILE



Art. 23P03K329  
214 Petrolio / Petroleum blue

PANTALONI COORDINABILI  
MATCHING PANTS  
pag. 58



**Art. 23P03K329**  
00 Bianco / White

**Art. 23P03K329**  
013 Fucsia / Fuchsia



**Art. 23P03K329**  
213 Prugna / Purple

**Art. 23P03K329**  
118 Azzurro / Light blue

**Art. 23P03K329**  
214 Petrolio / Petroleum blue



**Art. 23P03K329**  
004 Blu / Blue

**Art. 23P03K329**  
000 Nero / Black

# SONIA

## Dettagli / Details

- 2 tasche
- Taschino sul petto
- 2 spacchetti laterali

- 2 pockets
- Breast pocket
- 2 side vents

## Taglie / Sizes

XS ÷ XXXL Regular Fit

CeXmb " CeVX

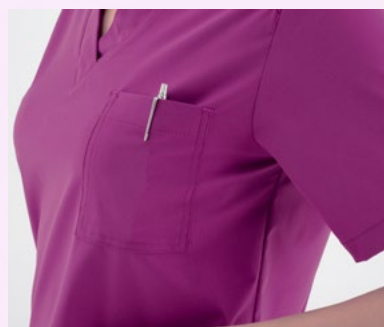
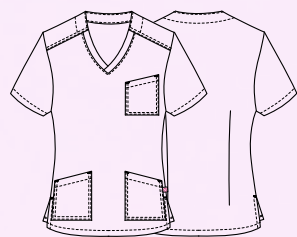
33€

## Art. 23P03K330

- 00 Bianco / White
- 013 Fucsia / Fuchsia
- 213 Prugna / Purple
- 118 Azzurro / Light blue
- 214 Petrolio / Petroleum blue
- 004 Blu / Blue
- 000 Nero / Black

## Tessuto / Fabric

- 100% poliestere
- 100% polyester
- 108 g / m<sup>2</sup>



sorona<sup>®</sup>  
AGILE



Art. 23P03K330  
213 Prugna / Purple

PANTALONI COORDINABILI  
MATCHING PANTS  
pag. 58



**Art. 23P03K330**  
00 Bianco / White



**Art. 23P03K330**  
013 Fucsia / Fuchsia



**Art. 23P03K330**  
213 Prugna / Purple



**Art. 23P03K330**  
118 Azzurro / Light blue



**Art. 23P03K330**  
214 Petrolio / Petroleum blue



**Art. 23P03K330**  
004 Blu / Blue



**Art. 23P03K330**  
000 Nero / Black



## health & wellness

Casacche

Tunics

# LUCA

### Dettagli / Details

- 2 tasche
- Taschino sul petto
- Portapenne
- Abbottonatura nascosta con automatici
- Polsini con elastico
- 2 spacchetti sul retro

- 2 pockets
- Breast pocket
- Pen pocket
- Concealed buttoning with press studs
- Cuffs with elastic band
- 2 rear vents

### Taglie / Sizes

S ÷ 4XL Slim Fit

CeXrmb™ CeVX

48,40€

### Art. 23P03K331

00 Bianco / White

013 Fucsia / Fuchsia

213 Prugna / Purple

118 Azzurro / Light blue

214 Petrolio / Petroleum blue

004 Blu / Blue

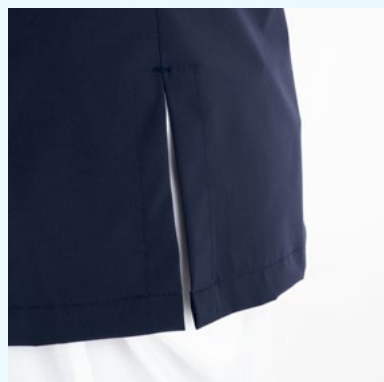
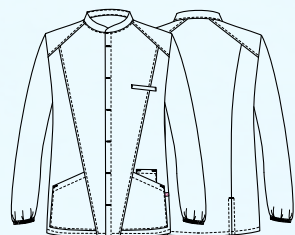
000 Nero / Black

### Tessuto / Fabric

100% poliestere

100% polyester

108 g / m<sup>2</sup>



sorona<sup>®</sup>  
AGILE



Art. 23P03K331  
004 Blu / Blue

PANTALONI COORDINABILI  
MATCHING PANTS  
pag. 58





**Art. 23P03K331**  
00 Bianco / White



**Art. 23P03K331**  
013 Fucsia / Fuchsia



**Art. 23P03K331**  
213 Prugna / Purple



**Art. 23P03K331**  
118 Azzurro / Light blue



**Art. 23P03K331**  
214 Petrolio / Petroleum blue



**Art. 23P03K331**  
004 Blu / Blue



**Art. 23P03K331**  
000 Nero / Black

## health & wellness

Casacche

Tunics

# LIA

### Dettagli / Details

- 2 tasche
- Taschino sul petto
- Portapenne
- Abbottonatura nascosta con automatici
- Polsini con elastico
- 2 spacchetti sul retro

- 2 pockets
- Breast pocket
- Pen pocket
- Concealed buttoning with press studs
- Cuffs with elastic band
- 2 rear vents

### Taglie / Sizes

XS ÷ XXXL Slim Fit

CeXmb " " CeVX

48,40€

### Art. 23P03K332

00 Bianco / White

013 Fucsia / Fuchsia

213 Prugna / Purple

118 Azzurro / Light blue

214 Petrolio / Petroleum blue

004 Blu / Blue

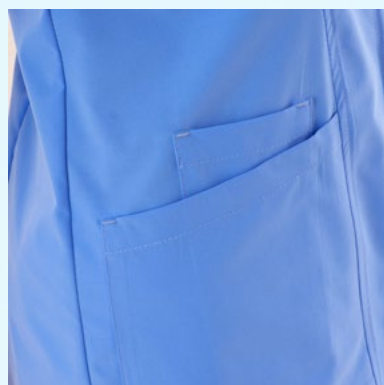
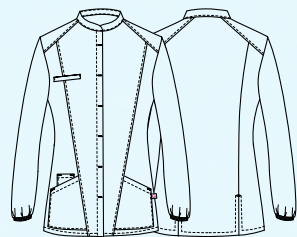
000 Nero / Black

### Tessuto / Fabric

100% poliestere

100% polyester

108 g / m<sup>2</sup>



sorona<sup>®</sup>  
AGILE



Art. 23P03K332  
118 Azzurro / Light blue

PANTALONI COORDINABILI  
MATCHING PANTS  
pag. 58



**Art. 23P03K332**  
00 Bianco / White



**Art. 23P03K332**  
013 Fucsia / Fuchsia



**Art. 23P03K332**  
213 Prugna / Purple



**Art. 23P03K332**  
118 Azzurro / Light blue



**Art. 23P03K332**  
214 Petrolio / Petroleum blue



**Art. 23P03K332**  
004 Blu / Blue



**Art. 23P03K332**  
000 Nero / Black

## health & wellness

Pantaloni

Pants

# CHRIS

### Dettagli / Details

- Pantaloni unisex
- 2 tasche
- 2 tasche sul retro
- Chiusura zip
- Elastico in vita
- Passanti cintura

- Unisex pants
- 2 pockets
- 2 rear pockets
- Zip fly
- Elasticated waistband
- Belt loops

### Taglie / Sizes

XS ÷ 4XL Slim Fit

CeXmb "" CeVX

36,85€

### Art. 23P03P336

00 Bianco / White

013 Fucsia / Fuchsia

213 Prugna / Purple

118 Azzurro / Light blue

214 Petrolio / Petroleum blue

004 Blu / Blue

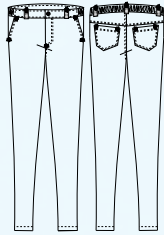
000 Nero / Black

### Tessuto / Fabric

100% poliestere

100% polyester

108 g / m<sup>2</sup>



ACCESSORI COORDINABILI  
MATCHING PANTS  
pag. 100



Art. 23P03P336  
000 Nero / Black

PANTALONI UNISEX  
UNISEX PANTS



**Art. 23P03P336**  
00 Bianco / White



**Art. 23P03P336**  
013 Fucsia / Fuchsia



**Art. 23P03P336**  
213 Prugna / Purple



**Art. 23P03P336**  
118 Azzurro / Light blue



**Art. 23P03P336**  
214 Petrolio / Petroleum blue



**Art. 23P03P336**  
004 Blu / Blue



**Art. 23P03P336**  
000 Nero / Black

# LUXSATIN

**STIRO FACILE / EASY CARE  
INDANTHRENE**



È un tessuto luminoso e colorato.  
Il punto di forza del **LUXSATIN** è l'armatura in satin, che conferisce al tessuto una mano molto liscia e setosa e ne valorizza i colori, che risultano **estremamente luminosi e incredibilmente brillanti**.

*LUXSATIN is a bright and colorful fabric. Its strength is the satin armor, that gives the fabric a soft and smooth hand and also enhance the colours, that result **extremely bright and incredibly shiny**.*

Grazie a queste caratteristiche Giblor's ha potuto sviluppare una collezione che presenta una **vastissima gamma colori** e offre al cliente la possibilità di coordinare un gran numero di prodotti.

*Thanks to this characteristics Giblor's could develop a collection that presents a **wide range of colours** and offers to the client the chance to coordinate a lot of products.*

Inoltre i 180 grammi di peso regalano al tessuto una consistenza molto morbida, che resta inalterata anche dopo numerosi lavaggi, garantendo capi sempre impeccabili ed un **effetto "appena stirato"** sempre molto apprezzato dal cliente finale.

*Furthermore, the 180 gr. of weight give to the fabric a really soft texture, that remains unchanged even after several washings, by ensuring garments to be always flawless and with a **"just ironed" effect** that is always greatly appreciated from the client.*

Realizzato in misto cotone, il **LUXSATIN** ha una grande resistenza alle trazioni e sopporta senza stress temperature elevate e candeggio.

*Made up of cotton-poly blend, **LUXSATIN** has a great tensile strength and withstands high temperatures and bleaching.*

# MARGHERITA

## Dettagli / Details

- 2 tasche
- Taschino sul petto
- 2 spacchetti laterali

- 2 pockets
- Breast pocket
- 2 side vents

## Taglie / Sizes

XS ÷ XXXL Regular Fit

CeXnmb™ CeVX

31,90€

**Art. 10M2062**

00 Bianco / White

CeXnmb™ CeVX

31,90€

**Art. 10M2062C**

002 Verde / Green

118 Azzurro / Light blue 004

Blu / Blue

321 Bluette / Royal

519 Bordeaux / Burgundy

597 Lilla / Lilac

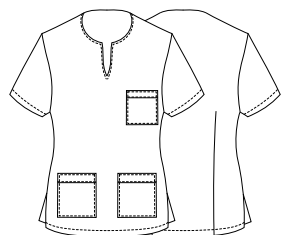
## Tessuto / Fabric

50% cotone 50% poliestere

50% cotton 50% polyester

180 g / m<sup>2</sup>

LUXSATIN



PANTALONI COORDINABILI  
MATCHING PANTS  
pag. 76 / 77





**Art. 10M2062C**  
002 Verde / Green



LUXSATIN



**Art. 10M2062C**  
118 Azzurro / Light blue



LUXSATIN



**Art. 10M2062C**  
004 Blu / Blue



LUXSATIN



**Art. 10M2062C**  
321 Bluette / Royal



LUXSATIN



**Art. 10M2062C**  
519 Bordeaux / Burgundy



LUXSATIN



**Art. 10M2062C**  
597 Lilla / Lilac



LUXSATIN

ACCESSORI COORDINABILI  
MATCHING ACCESSORIES

pag. 99

# ALBERTO

## Dettagli / Details

- 2 tasche
- Taschino sul petto
- 2 spacchetti laterali

- 2 pockets
- Breast pocket
- 2 side vents

## Taglie / Sizes

XS ÷ 4XL Regular Fit

CeXmb " " CeVX

29,70€

### Art. 10M2019

00 Bianco / White

CeXmb " " CeVX

33€

### Art. 10M2020

002 Verde / Green

118 Azzurro / Light blue 004

Blu / Blue

321 Bluette / Royal

519 Bordeaux / Burgundy

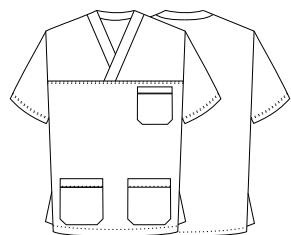
## Tessuto / Fabric

50% cotone 50% poliestere

50% cotton 50% polyester

180 g / m<sup>2</sup>

LUXSATIN



PANTALONI COORDINABILI  
MATCHING PANTS

pag. 76 / 77



**Art. 10M2020**  
002 Verde / Green



LUXSATIN



**Art. 10M2020**  
118 Azzurro / Light blue



LUXSATIN



**Art. 10M2020**  
004 Blu / Blue



LUXSATIN



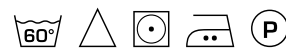
**Art. 10M2020**  
321 Bluette / Royal



LUXSATIN



**Art. 10M2020**  
519 Bordeaux / Burgundy



LUXSATIN

# TATI

## Dettagli / Details

- 2 tasche
- Taschino sul petto
- Abbottonatura nascosta con automatici

- 2 pockets
- Breast pocket
- Concealed buttoning with press studs

## Taglie / Sizes

XS ÷ XXXL Slim Fit

CeXnmb™ CeVX

41,80€

### Art. 21P03K494

00 Bianco / White

CeXnmb™ CeVX

44€

### Art. 17P03K494

002 Verde / Green

118 Azzurro / Light blue 321

Bluette / Royal

597 Lilla / Lilac

CeXnmb™ CeVX

44€

### Art. 14P03K494

004 Blu / Blue

CeXnmb™ CeVX

44€

### Art. 12P03K269

519 Bordeaux / Burgundy

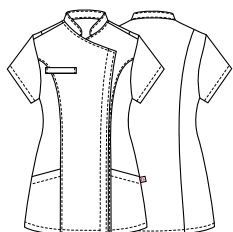
## Tessuto / Fabric

50% cotone 50% poliestere

50% cotton 50% polyester

180 g / m<sup>2</sup>

LUXSATIN



PANTALONI COORDINABILI  
MATCHING PANTS

pag. 76 / 77



**Art. 17P03K494**  
002 Verde / Green



LUXSATIN



**Art. 17P03K494**  
118 Azzurro / Light blue



LUXSATIN



**Art. 17P03K494**  
321 Bluette / Royal



LUXSATIN



**Art. 17P03K494**  
597 Lilla / Lilac



LUXSATIN



**Art. 14P03K494**  
004 Blu / Blue



LUXSATIN



**Art. 12P03K269**  
519 Bordeaux / Burgundy



LUXSATIN

ACCESSORI COORDINABILI  
MATCHING ACCESSORIES  
pag. 99

# TANIA

## Dettagli / Details

- 1 tasca
- Taschino sul petto
- Abbottonatura nascosta con automatici
- 2 spacchetti dietro

- 1 pocket
- Breast pocket
- Concealed buttoning with press studs
- 2 rear vents

## Taglie / Sizes

XS ÷ XXXL Slim Fit

CeXmb " CeVX

42,90€

## Art. 21P03K242

0-004 Bianco Blu / White Blue

0-002 Bianco Verde / White Green

## Tessuto / Fabric

50% cotone 50% poliestere

50% cotton 50% polyester

180 g / m<sup>2</sup>



LUXSATIN



## PANTALONI COORDINABILI

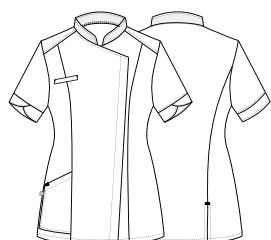
### MATCHING PANTS

pag. 76 / 77

## ACCESSORI COORDINABILI

### MATCHING ACCESSORIES

pag. 99



Art. 21P03K242  
0-002 Bianco Verde / White Green

LUXSATIN



Art. 21P03K242  
0-004 Bianco Blu / White Blue

# RUGGERO

## Dettagli / Details

- 1 tasca
- Taschino sul petto
- Chiusura con zip rovesciata
- 2 spacchetti dietro

- 1 pocket
- Breast pocket
- Inverted zip fastening
- 2 rear vents

## Taglie / Sizes

S ÷ 4XL Slim Fit

CeXnmb "" CeVX

43,45€

### Art. 21P03K489

00 Bianco / White

CeXnmb "" CeVX

44€

### Art. 17P03K489

519 Bordeaux / Burgundy

118 Azzurro / Light blue 321

Bluette / Royal

CeXnmb "" CeVX

45,10€

### Art. 14P03K489

002 Verde / Green

004 Blu / Blue

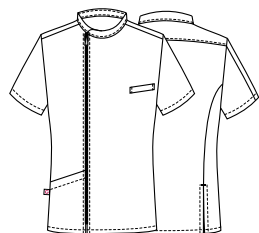
## Tessuto / Fabric

50% cotone 50% poliestere

50% cotton 50% polyester

180 g / m<sup>2</sup>

LUXSATIN



PANTALONI COORDINABILI  
MATCHING PANTS

pag. 76 / 77





**Art. 17P03K489**  
519 Bordeaux / Burgundy



LUXSATIN



**Art. 17P03K489**  
118 Azzurro / Light blue



LUXSATIN



**Art. 17P03K489**  
321 Bluette / Royal



LUXSATIN



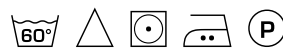
**Art. 14P03K489**  
002 Verde / Green



LUXSATIN



**Art. 14P03K489**  
004 Blu / Blue



LUXSATIN

ACCESSORI COORDINABILI  
MATCHING ACCESSORIES

pag. 99

# AMANDA

## Dettagli / Details

- 2 tasche
- Taschino sul petto
- Abbottonatura nascosta con automatici
- Polsino con elastico

- 2 pockets
- Breast pocket
- Concealed buttoning with press studs
- Cuff with elastic band

## Taglie / Sizes

XS ÷ XXXL Slim Fit

CeXmb " " CeVX

45,10€

## Art. 17P03K329

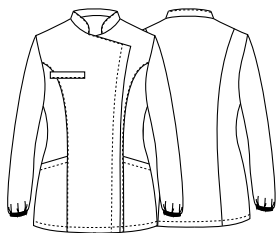
00 Bianco / White

002 Verde / Green

519 Bordeaux / Burgundy

118 Azzurro / Light blue

LUXSATIN



PANTALONI COORDINABILI  
MATCHING PANTS

pag. 76 / 77



**Art. 17P03K329**  
002 Verde / Green



LUXSATIN



**Art. 17P03K329**  
519 Bordeaux / Burgundy



LUXSATIN



**Art. 17P03K329**  
118 Azzurro / Light blue



LUXSATIN

# RUGGERO

## Dettagli / Details

- 1 tasca
- Taschino sul petto
- Chiusura con zip rovesciata
- Polsino in maglia
- 2 spacchetti dietro

- 1 pocket
- Breast pocket
- Inverted zip fastening
- Knitted cuff
- 2 rear vents

## Taglie / Sizes

S ÷ 4XL Slim Fit

LUXSATIN

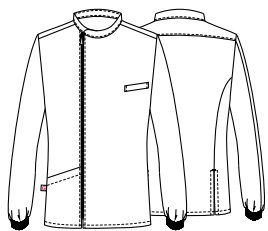
**Art. 21P03K490** CeXmb™ Celix  
00 Bianco / White 47,30€

**Art. 14P03K490** CeXmb™ Celix  
004 Blu / Blue 47,30€  
002 Verde / Green  
118 Azzurro / Light blue  
321 Bluette / Royal

**Art. 17P03K490** CeXmb™ Celix  
519 Bordeaux / Burgundy 49,50€

## Tessuto / Fabric

50% cotone 50% poliestere  
50% cotton 50% polyester  
180 g / m<sup>2</sup>



PANTALONI COORDINABILI  
MATCHING PANTS

pag. 76 / 77



**Art. 14P03K490**  
004 Blu / Blue



LUXSATIN



**Art. 14P03K490**  
002 Verde / Green



LUXSATIN



**Art. 14P03K490**  
118 Azzurro / Light blue



LUXSATIN



**Art. 14P03K490**  
321 Bluette / Royal



LUXSATIN



**Art. 17P03K490**  
519 Bordeaux / Burgundy



LUXSATIN

ACCESSORI COORDINABILI  
MATCHING ACCESSORIES

pag. 99

# RODI

## Dettagli / Details

- 2 tasche
- 1 tasca sul retro
- Elastico e coulisse in vita

- 2 pockets
- 1 rear pocket
- Elasticated waistband with drawstring

## Taglie / Sizes

XS ÷ 4XL Regular Fit

CeXmb™ CeVX

28,60€

**Art. 10M2061**

00 Bianco / White

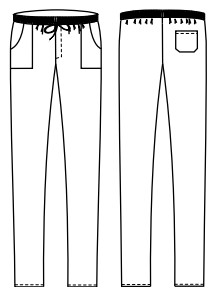
## Tessuto / Fabric

50% cotone 50% poliestere

50% cotton 50% polyester

180 g / m<sup>2</sup>

LUXSATIN



ACCESSORI COORDINABILI  
MATCHING ACCESSORIES

pag. 99



**Art. 10M2061C**  
597 Lilla / Lilac

LUXSATIN



**Art. 10M2061C**  
002 Verde / Green

LUXSATIN



**Art. 10M2061C**  
118 Azzurro / Light blue

LUXSATIN

## RODI

### Dettagli / Details

- 2 tasche
- 1 tasca sul retro
- Elastico e coulisse

- 2 pockets
- 1 rear pocket
- Elasticated waistband with drawstring

### Taglie / Sizes

XS ÷ 4XL Regular Fit

### Tessuto / Fabric

50% cotone 50% poliestere  
50% cotton 50% polyester  
180 g / m<sup>2</sup>

### Art. 10M2061C

597 Lilla / Lilac  
002 Verde / Green  
118 Azzurro / Light blue  
321 Bluette / Royal  
519 Bordeaux / Burgundy



**Art. 10M2061C**  
321 Bluette / Royal

LUXSATIN



**Art. 10M2061C**  
519 Bordeaux / Burgundy

LUXSATIN



**Art. 14P03P556**  
004 Blu / Blue

LUXSATIN

## ALAN

### Dettagli / Details

- 2 tasche
- 1 tasca sul retro
- Elastico e coulisse

- 2 pockets
- 1 rear pocket
- Elasticated waistband with drawstring

### Taglie / Sizes

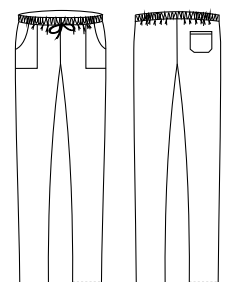
XS ÷ 4XL Slim Fit

### Tessuto / Fabric

50% cotone 50% poliestere  
50% cotton 50% polyester  
180 g / m<sup>2</sup>

### Art. 14P03P556

004 Blu / Blue



# 100% COTONE

**ORGANICO / ORGANIC  
INDANTHRENE**





La linea di prodotti in **100% COTONE** è stata ampliata per soddisfare le richieste dei tanti clienti che, soprattutto in ambito medicale, cercano capi realizzati in fibre comode, naturali ed estremamente traspiranti.

Il tessuto in **100% COTONE**, presenta una tramatura più compatta e regolare rispetto ad altre fibre analoghe. Il risultato è una consistenza morbida e piacevole, il cui peso varia fra i 180 e i 190 grammi.

Si tratta inoltre di un twill accuratamente finissato con tecniche di sanforizzazione. Tale trattamento, oltre a renderne più facile la stiratura, garantisce ai capi in cotone una pregevole stabilità dimensionale nei lavaggi alle alte temperature, oltre che una resistenza al candeggio in grado di assicurare standard ottimali di durata nel tempo.

*The **100% COTONE** product line has been expanded to meet the demands of many customers, especially in the Medical field, who look for garments made of comfortable, natural and extremely breathable fibers.*

*The **100% COTONE** fabric has a more compact and regular weave than other similar fibers. The result is one soft and pleasant texture, whose weight varies between 180 and 190 gr.*

*It is also a carefully finished twill with sanforization techniques. In addition to making ironing easier, this treatment guarantees cotton garments a remarkable dimensional stability when washed at high temperatures, as well as a resistance to bleaching that is able to ensure optimal standards of durability.*

# GABRIELE

## Dettagli / Details

- Chiusura con zip rovesciata
- Taschino sul petto
- 2 tasche
- Polsini con elastico
- Doppio cursore
- 2 spacchetti dietro

- *Inverted zip fastening*
- *Breast pocket*
- *2 pockets*
- *Cuffs with elastic band*
- *Double slide*
- *2 rear vents*

## Taglie / Sizes

S ÷ 4XL Slim Fit

**Art. 20P03K191**  

00 Bianco / White 38,50€

**Art. 21P03K194**  

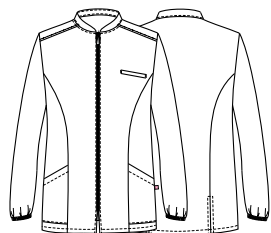
004 Blu / Blue 41,80€

**Art. 20P03K194**  

002 Verde / Green 41,80€  
118 Azzurro / Light blue

## Tessuto / Fabric

100% cotone  
100% cotton  
185 g / m<sup>2</sup>



PANTALONI COORDINABILI  
MATCHING PANTS

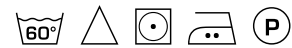
pag. 93



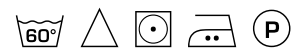
**Art. 21P03K194**  
004 Blu / Blue  
100% cotone / cotton - 185 g / m<sup>2</sup>



**Art. 20P03K194**  
002 Verde / Green  
100% cotone / cotton - 185 g / m<sup>2</sup>



**Art. 20P03K194**  
118 Azzurro / Light blue  
100% cotone / cotton - 185 g / m<sup>2</sup>



# PIERO

## Dettagli / Details

- 2 tasche
- Taschino sul petto
- 2 spacchetti laterali

- 2 pockets
- Breast pocket
- 2 side vents

### Art. 1330

00 Bianco / White

CeXnmb " " CeVIX

17,60€

### Art. 21P03K1335

004 Blu / Blue

CeXnmb " " CeVIX

23,10€

### Art. 1335

002 Verde / Green

118 Azzurro / Light blue

CeXnmb " " CeVIX

22€

## Taglie / Sizes

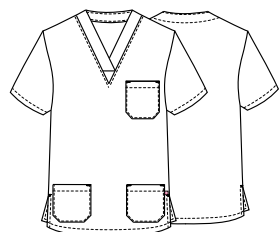
XS ÷ 4XL Slim Fit

## Tessuto / Fabric

100% cotone

100% cotton

185 g / m<sup>2</sup>



PANTALONI COORDINABILI  
MATCHING PANTS

pag. 93



**Art. 1335**  
002 Verde / Green  
100% cotone / cotton - 185 g / m<sup>2</sup>



**Art. 21P03K1335**  
004 Blu / Blue  
100% cotone / cotton - 185 g / m<sup>2</sup>



**Art. 1335**  
118 Azzurro / Light blue  
100% cotone / cotton - 185 g / m<sup>2</sup>



# JASON

## Dettagli / Details

- Casacca unisex
- 2 tasche
- Taschino sul petto
- 2 spacchetti laterali

- Unisex tunic
- 2 pockets
- Breast pocket
- 2 side vents

## Taglie / Sizes

XS ÷ 4XL Slim Fit

CeXmb™ CeVX

16,50€

**Art. Q3K00242**

C01 Bianco / White

## Tessuto / Fabric

100% cotone

100% cotton

185 g / m<sup>2</sup>

CeXmb™ CeVX

22€

**Art. Q3K00243**

C07 Lilla chiaro / Light lilac

C09 Pistacchio / Pistachio

D24 Arancio / Orange U38

Bluette / Royal

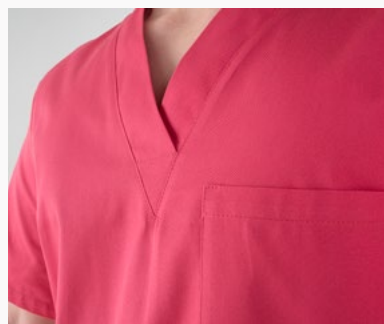
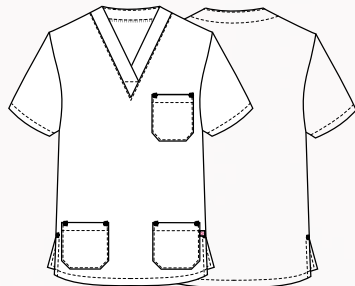
Z46 Fucsia / Fuchsia

## Tessuto / Fabric

100% cotone

100% cotton

200 g / m<sup>2</sup>



**PANTALONI COORDINABILI**  
**MATCHING PANTS**

pag. 94

**ACCESSORI COORDINABILI**  
**MATCHING PANTS**

pag. 101



**Art. Q3K00243**

Z46 Fucsia / Fuchsia

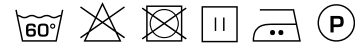
**CASACCA UNISEX**  
**UNISEX TUNIC**



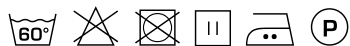
**Art. Q3K00242**  
C01 Bianco / White



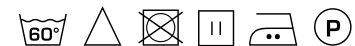
**Art. Q3K00243**  
U38 Bluette / Royal



**Art. Q3K00243**  
C09 Pistacchio / Pistachio



**Art. Q3K00243**  
Z46 Fucsia / Fuchsia



**Art. Q3K00243**  
C07 Lilla chiaro / Light lilac



**Art. Q3K00243**  
D24 Arancio / Orange



# GARY

## Dettagli / Details

- Casacca unisex
- 2 tasche
- Taschino sul petto
- 2 spacchetti laterali

- Unisex tunic
- 2 pockets
- Breast pocket
- 2 side vents

## Taglie / Sizes

XS ÷ 4XL Slim Fit

CeXrnrb "" CeVX

18,70€

## Art. Q3K00244

P18 Profilo azzurro / Light blue piping

P24 Profilo arancio / Orange piping

P29 Profilo verde / Green piping

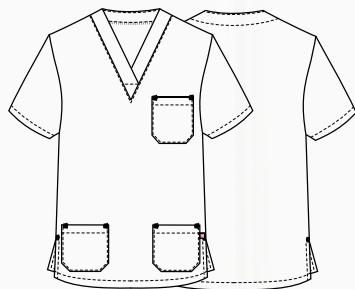
P48 Profilo blu / Blue piping

## Tessuto / Fabric

100% cotone

100% cotton

185 g / m<sup>2</sup>



PANTALONI COORDINABILI  
MATCHING PANTS

pag. 94

ACCESSORI COORDINABILI  
MATCHING PANTS

pag. 101

Art. Q3K00244

P24 Profilo arancio / Orange piping

CASACCA UNISEX  
UNISEX TUNIC





**Art. Q3K00244**  
P48 Profilo blu / *Blue piping*



**Art. Q3K00244**  
P29 Profilo verde / *Green piping*



**Art. Q3K00244**  
P18 Profilo azzurro / *Light blue piping*



**Art. Q3K00244**  
P24 Profilo arancio / *Orange piping*

# ALICE

## Dettagli / Details

- Chiusura con zip rovesciata
- Taschino sul petto
- 2 tasche
- Polsini con elastico
- Doppio cursore

- *Inverted zip fastening*
- *Breast pocket*
- *2 pockets*
- *Cuffs with elastic band*
- *Double slide*

**Art. 20P03K192** CeXmb " " CeVX  
00 Bianco / White 38,50€

**Art. 21P03K195** CeXmb " " CeVX  
004 Blu / Blue 41,80€

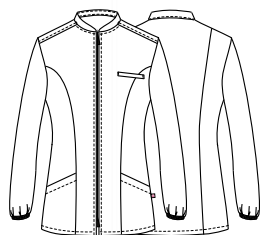
**Art. 20P03K195** CeXmb " " CeVX  
002 Verde / Green 41,80€  
118 Azzurro / Light blue

## Taglie / Sizes

XS ÷ XXXL Slim Fit

## Tessuto / Fabric

100% cotone  
100% cotton  
185 g / m<sup>2</sup>



PANTALONI COORDINABILI  
MATCHING PANTS  
pag. 93



**Art. 21P03K195**  
004 Blu / Blue  
100% cotone / cotton - 185 g / m<sup>2</sup>



**Art. 20P03K195**  
002 Verde / Green  
100% cotone / cotton - 185 g / m<sup>2</sup>



**Art. 20P03K195**  
118 Azzurro / Light blue  
100% cotone / cotton - 185 g / m<sup>2</sup>



# MILENA

## Dettagli / Details

- 2 tasche
- Taschino sul petto
- 2 spacchetti laterali

- 2 pockets
- Breast pocket
- 2 side vents

**Art. 20P03K193** CeXmb™ CeVX  
00 Bianco / White 23,10€

**Art. 21P03K196** CeXmb™ CeVX  
004 Blu / Blue 27,50€

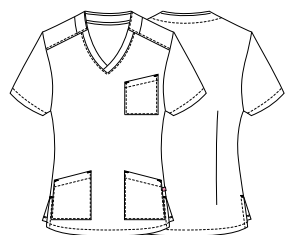
**Art. 20P03K196** CeXmb™ CeVX  
002 Verde / Green 47,50€  
118 Azzurro / Light blue

## Taglie / Sizes

XS ÷ XXXL Slim Fit

## Tessuto / Fabric

100% cotone  
100% cotton  
185 g / m<sup>2</sup>



PANTALONI COORDINABILI  
MATCHING PANTS  
pag. 93



**Art. 20P03K196**

002 Verde / Green  
100% cotone / cotton - 185 g / m<sup>2</sup>



**Art. 21P03K196**

004 Blu / Blue  
100% cotone / cotton - 185 g / m<sup>2</sup>



**Art. 20P03K196**

118 Azzurro / Light blue  
100% cotone / cotton - 185 g / m<sup>2</sup>



# ALAN

**Dettagli / Details**

- 2 tasche
- 1 tasca sul retro
- Elastico e coulisse

- 2 pockets
- 1 rear pocket
- Elasticated waistband with drawstring

CeXnmb " " CeVX **Art. 21P03P1340**  
25,30€ 004 Blu / Blue

CeXnmb " " CeVX **Art. 123**  
20,90€ 00 Bianco / White

CeXnmb " " CeVX **Art. 1340**  
24,20€ 002 Verde / Green  
118 Azzurro / Light blue

**Tessuto / Fabric**

100% cotone  
100% cotton  
185 g / m<sup>2</sup>



**ART. 21P03P1340**  
XS ÷ 4XL Slim Fit



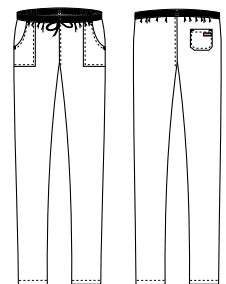
**ART. 123**  
XS ÷ 5XL Slim Fit



**Art. 1340**  
XS ÷ 4XL Slim Fit



**Art. 1340**  
XS ÷ 4XL Slim Fit



**ACCESSORI COORDINABILI**  
**MATCHING ACCESSORIES**  
pag. 99

# PITAGORA

## Dettagli / Details

- 2 tasche
- 1 tasca sul retro
- Elastico e coulisse

- 2 pockets
- 1 rear pocket
- Elasticated waistband with drawstring

## Taglie / Sizes

XS ÷ 4XL Slim Fit

CeXmb "" CeVX

16,50€

### Art. Q3P00245

C01 Bianco / White

## Tessuto / Fabric

100% cotone  
100% cotton  
185 g / m<sup>2</sup>

CeXmb "" CeVX

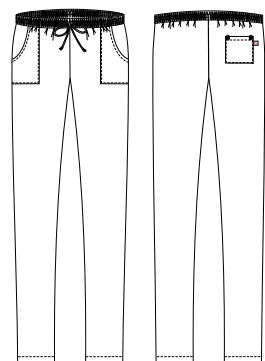
22€

### Art. Q3P00246

C07 Lilla chiaro / Light lilac  
C09 Pistacchio / Pistachio  
D24 Arancio / Orange U38  
Bluette / Royal  
Z46 Fucsia / Fuchsia

## Tessuto / Fabric

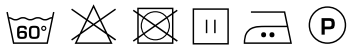
100% cotone  
100% cotton  
200 g / m<sup>2</sup>



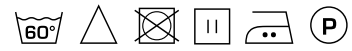
Art. Q3P00245  
C01 Bianco / White



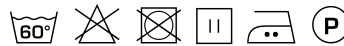
**Art. Q3P00246**  
C09 Pistacchio / Pistachio



**Art. Q3P00246**  
Z46 Fucsia / Fuchsia



**Art. Q3P00246**  
U38 Bluette / Royal



**Art. Q3P00246**  
C07 Lilla chiaro / Light lilac



**Art. Q3P00246**  
D24 Arancio / Orange



**ACCESSORI COORDINABILI**  
**MATCHING ACCESSORIES**  
pag. 101



# BANDANA URANO

**Taglie / Sizes**

Taglia unica / One size

**Art. 23P05I979**

CeXrmb ···· CeVX  
9,90€

**Art.21P05I979**

CeXrmb ···· CeVX  
12,10€

**Art. 17P05I979**

CeXrmb ···· CeVX  
12,10€

**Tessuto / Fabric**

50% lyocell 50% poliestere  
50% lyocell 50% polyester  
180 g / m<sup>2</sup>



**Art. 23P05I265**  
**Art. 21P05I265**

**Tessuto / Fabric**

70% viscosa 27% poliestere 3% elasthan  
70% viscose 27% polyester 3% elastane  
200 g / m<sup>2</sup>



**Art. 23P05I979**  
000 Nero  
Black



**Art. 21P05I979**  
019 Grigio  
Grey



**Art. 17P05I979**  
00 Bianco  
White



**Art. 17P05I979**  
029 Pistacchio  
Pistachio



**Art. 17P05I979**  
004 Blu  
Blue



**Art. 23P05I265**  
J322 Jeans marrone  
Brown jeans



**Art. 21P05I265**  
J004 Jeans blu  
Blue jeans

# BANDANA MERCURIO

Taglie / Sizes

Taglia unica / One size

CeXmb " " CeVX

10,10€

**Art. 443DIVA**

Tessuto / Fabric

50% cotone 50% poliestere  
50% cotton 50% polyester  
180 g / m<sup>2</sup>

004 Blu / Blue

118 Azzurro / Light blue

321 Bluette / Royal

002 Verde / Green

519 Bordeaux / Burgundy

527 Lilla / Lilac



00 Bianco / White



LUXSATIN



**Art. 443DIVA**  
004 Blu  
Blue

LUXSATIN



**Art. 443DIVA**  
118 Azzurro  
Light blue

LUXSATIN



**Art. 443DIVA**  
321 Bluette  
Royal

LUXSATIN



**Art. 443DIVA**  
002 Verde  
Green

LUXSATIN



**Art. 443DIVA**  
519 Bordeaux  
Burgundy

LUXSATIN



**Art. 443DIVA**  
527 Lilla  
Lilac

LUXSATIN



**Art. 443DIVA**  
00 Bianco  
White

LUXSATIN



**Art. 21P05I443**  
004 Blu  
Blue

LUXSATIN



**Art. 20P05I443**  
118 Azzurro  
Light blue

LUXSATIN



**Art. 20P05I443**  
002 Verde  
Green

**Art. 20P05I443**

**Art. 21P05I443**

Tessuto / Fabric

100% cotone  
100% cotton  
185 g / m<sup>2</sup>



# BANDANA URANO

**Taglie / Sizes**

Taglia unica / One size

CeXmb™ CeVX

9,90€

**Art. 23P05I263**

00 Bianco / White

013 Fucsia / Fuchsia

213 Prugna / Purple

118 Azzurro / Light blue

214 Petrolio / Petroleum blue

004 Blu / Blue

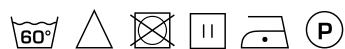
000 Nero / Black

**Tessuto / Fabric**

100% poliestere

100% polyester

108 g / m<sup>2</sup>



sorona®  
AGILE



**Art. 23P05I263**  
00 Bianco  
White



**Art. 23P05I263**  
013 Fucsia  
Fuchsia



**Art. 23P05I263**  
213 Prugna  
Purple



**Art. 23P05I263**  
118 Azzurro  
Light blue



**Art. 23P05I263**  
214 Petrolio  
Petroleum blue



**Art. 23P05I263**  
004 Blu  
Blue



**Art. 23P05I263**  
000 Nero  
Black

# BANDANA MERCURIO

Taglie / Sizes

Taglia unica / One size

CeXnmb "" CeVX

8,25€

**Art. Q5100264**

U38 Bluette / Royal  
C09 Pistacchio / Pistachio  
C07 Lilla chiaro / Light lilac  
D24 Arancio / Orange  
Z46 Fucsia / Fuchsia

Tessuto / Fabric

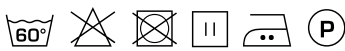
100% cotone

100% cotton

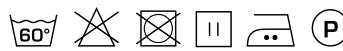
200 g / m<sup>2</sup>



**Art. Q5100264**  
U38 Bluette  
Royal



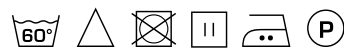
**Art. Q5100264**  
C09 Pistacchio  
Pistachio



**Art. Q5100264**  
C07 Lilla chiaro  
Light lilac



**Art. Q5100264**  
D24 Arancio  
Orange



**Art. Q5100264**  
Z46 Fucsia  
Fuchsia



# BANDANA URANO

Taglie / Sizes

Taglia unica / One size

CeXmb™ CeVX

11,55€

Art. 21P05I263

Tessuto / Fabric

100% poliestere

100% polyester

86 g / m<sup>2</sup>



Art. 21P05I263

F036 Dentifricio  
Toothpaste

Art. 21P05I263

F035 Denti  
Teeth



Art. 21P05I263

F030 Dolci  
Sweets

Art. 21P05I263

F034 Cerotti  
Plasters



Art. 21P05I263

F037 Formule  
Formulas

Art. 21P05I263

F031 Lettere  
Letters



Art. 21P05I263

F032 Mix  
Mix

Art. 21P05I263

F008 Lui & Lei  
Him and Her

# BANDANA URANO

Taglie / Sizes

Taglia unica / One size

CeXmb™ · CeVX

11,55€

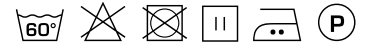
Art. 21P05I263

Tessuto / Fabric

100% poliestere

100% polyester

86 g / m<sup>2</sup>



Art. 21P05I263

F038 Leone nero

Black lion



Art. 21P05I263

F028 Coniglietti

Bunnies



Art. 21P05I263

F026 Gatti

Cats



Art. 21P05I263

F027 Tucani

Toucans



Art. 21P05I263

F029 Pesci

Fishes



Art. 21P05I263

F033 Cani

Dogs



Art. 21P05I263

F007 Cane e Gatto

Dog and Cat

**BIONIC  
FINISH® C<sub>6</sub>**



**SILVER+**

**ANTIMICROBICO / ANTIMICROBIAL**  
**TRASPIRANTE / BREATHABLE**  
**IDROREPELENTE / WATER RESISTANT**  
**WASH&WEAR / NO IRON**  
**ULTRA LIGHT 86 GR/M<sup>2</sup>**



**BIONIC-FINISH® È UN SISTEMA UNICO, BREVETTATO E SVILUPPATO PER CONFERIRE AI TESSUTI CARATTERISTICHE DI IDROREPELLENZA ALL'ACQUA, AGLI OLI E ALLE MACCHIE IN GENERALE.**

Ispirato alla pelle dello squalo che, contrariamente a quanto si pensi, non è liscia ma costituita da piccolissime scanalature longitudinali che lasciano passare l'acqua sul corpo in modo controllato, riducendone al minimo l'attrito, il **BIONIC-FINISH®** è **il primo sistema idrorepellente completo a livello mondiale per l'industria tessile.**

Il sistema **BIONIC-FINISH®** garantisce **massima traspirabilità** e consente al tessuto di mantenere una mano molto morbida, altissimo comfort, un'**eccellente durata nel tempo** e colori sempre nuovi e brillanti. Ma non è tutto: la composizione di questo agente impermeabilizzante offre il vantaggio di un'asciugatura estremamente rapida.

Inoltre, grazie al **trattamento antibatterico SILVERPLUS®**, i tessuti sono igienizzati e protetti dagli odori sgradevoli del corpo, anche a basse temperature di lavaggio.

Scopri di più a pagina 196 / Find out more on page 196

**BIONIC-FINISH® IS AN UNIQUE SYSTEM, PATENTED AND DEVELOPED TO GIVE WATER-REPELLENT CHARACTERISTICS TO WATER, OILS AND STAINS IN GENERAL.**

*Inspired by the skin of the shark that, contrary to popular belief, is not smooth but made up of very small longitudinal grooves that allow water to pass through the body in a controlled manner, reducing friction to a minimum, **BIONIC-FINISH®** is **the first water repellent system, complete worldwide for the textile industry.***

*The **BIONIC-FINISH®** system guarantees **maximum breathability** and allows the fabric to maintain a very soft hand, very high comfort, **excellent durability** and always new and brilliant colors. But that's not all: the composition of this waterproofing agent offers the advantage of extremely rapid drying.*

*Moreover, thanks to the **SILVERPLUS® antibacterial treatment**, the fabrics are sanitized and protected from unpleasant body odors, even at low washing temperatures.*



# CARMEN

## Dettagli / Details

- Taschino sul petto
- 2 tasche
- Chiusura con zip rovesciata
- Inserti in rete

- Breast pocket
- 2 pockets
- Inverted zip fastening
- Network fabric panels

## Taglie / Sizes

XS ÷ 3XL Slim Fit

**Art. Q2K00238** CeXnmb™ CeVX

C01 Bianco / White 30,25€

**Art. Q2K00239** CeXnmb™ CeVX

U32 Nero / Black 30,25€

## Tessuto / Fabric

100% poliestere  
100% polyester  
86 g / m<sup>2</sup>



**Art. Q2K00239**  
U32 Nero / Black

**Art. Q2K00238**  
C01 Bianco / White

BIONIC  
FINISH<sup>®</sup> C<sub>6</sub>

ULTRA  
LIGHT

## MAURIZIO

### Dettagli / Details

- Taschino sul petto
- 1 tasca
- Chiusura con zip rovesciata
- Inserti in rete

- Breast pocket
- 1 pocket
- Inverted zip fastening
- Network fabric panels

### Taglie / Sizes

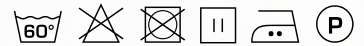
S ÷ 4XL Slim Fit

CeXnmb " " CeVX Art. Q2K00259  
30,25€ C01 Bianco / White

CeXnmb " " CeVX Art. Q2K00260  
30,25€ U32 Nero / Black

### Tessuto / Fabric

100% poliestere  
100% polyester  
86 g / m<sup>2</sup>



BIONIC  
FINISH<sup>®</sup> C<sub>6</sub>

ULTRA  
LIGHT  
86 GR.



Art. Q2K00259  
C01 Bianco / White

Art. Q2K00260  
U32 Nero / Black

BIONIC  
FINISH<sup>°C</sup><sub>6</sub>

Fresh &  
Stretch



Art. 23P03K1330  
F033 Cani / Dogs

# PIERO

## Dettagli / Details

- 2 tasche
- Taschino sul petto
- 2 spacchetti laterali

- 2 pockets
- Breast pocket
- 2 side vents

## Taglie / Sizes

XS ÷ 4XL Slim Fit

CeXrmb " " CeVX

33€

**Art. 23P03K1330**

F033 Cani / Dogs

F036 Dentifricio / Toothpaste

BIONIC  
FINISH<sup>®</sup>C<sub>6</sub>

Fresh &  
Stretch

## Tessuto / Fabric

100% poliestere  
100% polyester  
86 g / m<sup>2</sup>



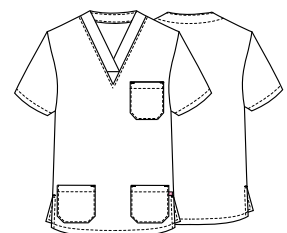
**Art. 23P03K1330**  
F033 Cani / Dogs



**Art. 23P03K1330**  
F036 Dentifricio / Toothpaste

BIONIC  
FINISH<sup>®</sup>C<sub>6</sub>

Fresh &  
Stretch



# ELEA

## Dettagli / Details

- 2 tasche
- Bottoni a pressione
- Inserti in rete

- 2 pockets
- Press studs
- Network fabric panels

## Taglie / Sizes

XS ÷ XXXL Slim Fit

CeXmb™ CeVX

36,3€

## Art. 23P03K334

F008 Lui & Lei / Him and Her

F026 Gatti / Cats

F028 Coniglietti / Bunnies

F031 Lettere / Letters

F033 Cani / Dogs

F035 Denti / Teeth

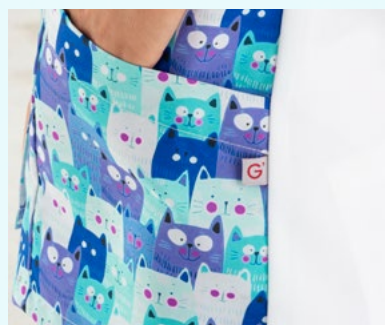
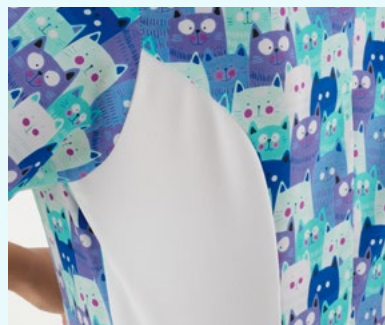
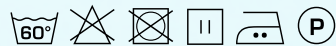
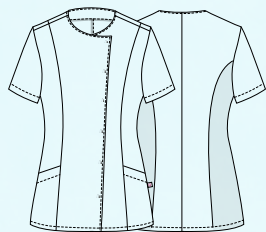
F036 Dentifricio / Toothpaste

## Tessuto / Fabric

100% poliestere

100% polyester

86 g / m<sup>2</sup>



Art. 23P03K334  
F026 Gatti / Cats



BIONIC  
FINISH<sup>®</sup> C<sub>6</sub>  
Fresh &  
Stretch

**Art. 23P03K334**  
F008 Lui & Lei / Him and Her

**Art. 23P03K334**  
F026 Gatti / Cats



BIONIC  
FINISH<sup>®</sup> C<sub>6</sub>  
Fresh &  
Stretch



BIONIC  
FINISH<sup>®</sup> C<sub>6</sub>  
Fresh &  
Stretch

**Art. 23P03K334**  
F028 Coniglietti / Bunnies

**Art. 23P03K334**  
F031 Lettere / Letters

**Art. 23P03K334**  
F033 Cani / Dogs



BIONIC  
FINISH<sup>®</sup> C<sub>6</sub>  
Fresh &  
Stretch



ACCESSORI COORDINABILI  
MATCHING ACCESSORIES  
pag. 102/103

**Art. 23P03K334**  
F035 Denti / Teeth

**Art. 23P03K334**  
F036 Dentifricio / Toothpaste



# LONDON

## Dettagli / Details

- Scamiciati
- 1 grande tasca
- Coperto dietro

- Pinafore
- 1 big pocket
- Covered backside

## Taglie / Sizes

Taglia unica / One size

CeXrmb "" CeVX

28,60€

## Art. 21P02H264

F033 Cani / Dogs

F031 Lettere / Letters

F038 Leone nero / Black lion

F007 Cane e Gatto / Dog and Cat

## Tessuto 1 / Fabric 1

100% poliestere

100% polyester

86 g / m<sup>2</sup>

## Tessuto 2 / Fabric 2

100% poliestere

100% polyester

160 g / m<sup>2</sup>



BIONIC  
FINISH<sup>°C</sup>



## Art. 21P02H264

F033 Cani / Dogs

## Art. 21P02H264

F031 Lettere / Letters



BIONIC  
FINISH<sup>°C</sup>

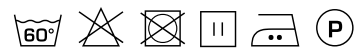
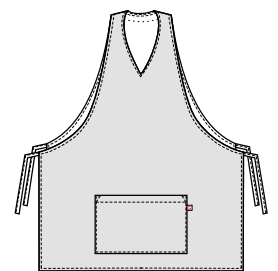


## Art. 21P02H264

F038 Leone nero / Black lion

## Art. 21P02H264

F007 Cane e Gatto / Dog and Cat



ACCESSORI COORDINABILI  
MATCHING ACCESSORIES

pag. 102/103



# LONDON

## Dettagli / Details

- Scamiciato
- 1 grande tasca
- Coperto dietro

- Pinafore
- 1 big pocket
- Covered backside

## Taglie / Sizes

Taglia unica / One size

CeXmb " CeVX

28,60€

## Art. 21P02H264

F028 Coniglietti / Bunnies

F026 Gatti / Cats

F029 Pesci / Fishes

F008 Lui & Lei / Him and Her

## Tessuto 1 / Fabric 1

100% poliestere

100% polyester

86 g / m<sup>2</sup>

## Tessuto 2 / Fabric 2

100% poliestere

100% polyester

160 g / m<sup>2</sup>

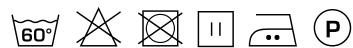
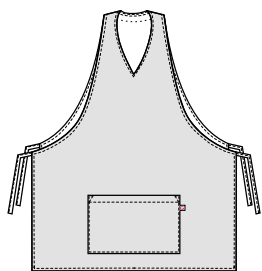


BIONIC  
FINISH<sup>°C</sup>8



**Art. 21P02H264**  
F028 Coniglietti / Bunnies

**Art. 21P02H264**  
F026 Gatti / Cats



BIONIC  
FINISH<sup>°C</sup>8



**Art. 21P02H264**  
F029 Pesci / Fishes

**Art. 21P02H264**  
F008 Lui & Lei / Him and Her

ACCESSORI COORDINABILI  
MATCHING ACCESSORIES  
pag. 102/103



## MANTELLA ZOE

### Dettagli / Details

- Mantella per taglio capelli
- Chiusura con laccetti

- Hair cutting cape
- Closure with laces

### Taglie / Sizes

Taglia unica / One size

### Misure / Dimensions

135x112 cm

### Art. 20P05I615

00 Bianco / White  
000 Nero / Black

### Tessuto / Fabric

100% poliestere  
100% polyester  
86 g / m<sup>2</sup>

### CeXmb™ CeWX

14€



BIONIC  
FINISH<sup>°C</sup><sub>6</sub>



Art. 19P02K830  
119 Grigio / Grey

# PAOLA

**Dettagli / Details**

- 1 tasca
- 2 spacchetti davanti

- 1 pocket
- 2 front vents

**Taglie / Sizes**

XS ÷ XXXL Slim Fit



**CeXmb " CeVX Art. 19P02K830**  
35,20€ 119 Grigio / Grey

**CeXmb " CeVX Art. 16P02K830**  
35,20€ 00 Bianco / White  
000 Nero / Black

**Tessuto / Fabric**

100% poliestere  
100% polyester  
86 g / m<sup>2</sup>

**Art. 19P02K830**  
119 Grigio / Grey



**Art. 16P02K830**  
00 Bianco / White



**Art. 16P02K830**  
000 Nero / Black



## health & wellness

Kimono

Kimono

# NADIA

### Dettagli / Details

- 2 tasche
- 2 spacchetti laterali

- 2 pockets
- 2 side vents

### Taglie / Sizes

I - II - III Regular Fit

	I	II	III
Torace / Chest	80-94 cm	95-109 cm	110-125 cm
Bacino / Hips	84-100 cm	101-111 cm	112-124 cm

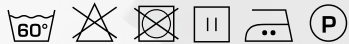
Art. 21P02K261 **CeXmb** **CeX**

00 Bianco / White 35,20€

000 Nero / Black

### Tessuto / Fabric

100% poliestere  
100% polyester  
86 g / m<sup>2</sup>



Art. 21P02K261  
00 Bianco / White

# ALLEGRA

**Dettagli / Details**

- 1 grande tasca
- 2 spacchetti laterali

- 1 big pocket
- 2 side vents

**Taglie / Sizes**

I - II Regular Fit

	I	II
Torace / Chest	80-96 cm	97-121 cm
Bacino / Hips	84-104 cm	105-124 cm

**Art. 23P02K339**

30,80€

00 Bianco / White  
000 Nero / Black

**Tessuto / Fabric**

100% poliestere  
100% polyester  
160 g / m<sup>2</sup>



**Art. 23P02K339**  
000 Nero / Black



 **Fresh &  
Stretch**



Frutto della continua ricerca e della grande maestria del team dell'ufficio stile **Giblor's**, i nuovi capi **Fresh & Stretch**, realizzati abbinando i nostri tessuti più performanti al tessuto in rete, o completamente **Fresh & Stretch**, rappresentano una svolta in termini di traspirabilità, comfort e design.

Chi trascorre molte ore in movimento indossando una divisa, sa bene quanto sia importante lasciare la pelle a contatto con l'aria, senza rinunciare alla protezione del tessuto.

Da questa esigenza nasce l'idea di creare dei capi che abbiano una sempre maggiore componente di tessuto in rete, passando dai piccoli inserti utilizzati finora in posizioni strategiche ad intere porzioni della divisa, come la totalità della parte posteriore o addirittura l'intero capo.

Un'idea non semplice da tradurre in realtà, perché è essenziale che il comfort e la vestibilità mantengano un livello di eccellenza.

Questo significa tagli studiati al millimetro e cuciture rifinite con precisione, design perfetto e un fit fluido per ogni singola tipologia di divisa.

Nei nuovi capi **Fresh & Stretch** troverete tutto questo, in puro stile **Giblor's**.

*The result of the continuous research and great skill of the **Giblor's** style office team, the new garments **Fresh & Stretch**, made by combining our best performing fabrics with mesh fabric, or completely **Fresh & Stretch**, represent a turning point in terms of comfort, breathability and design. Anyone who spends many hours on the move wearing a uniform knows how important it is to leave the skin in contact with the air, without sacrificing the protection of the fabric.*

*From this need, the idea of creating garments that have an ever greater component of mesh fabric arises, passing from the small inserts used so far in strategic positions to entire portions of the uniform, such as the entire back or even the entire garment.*

*An idea that is not easy to translate into reality, because it is essential that comfort and wearability maintain a level of excellence. This means cuts studied to the millimeter and stitching finished with precision, perfect design and a fluid fit for every single type of uniform. In the new **Fresh & Stretch** garments you will find all this, in pure **Giblor's** style.*



# NICOLE

## Dettagli / Details

- 1 tasca
- Taschino sul petto
- Chiusura con zip rovesciata
- 2 spacchetti dietro

- 1 pocket
- Breast pocket
- Inverted zip fastening
- 2 rear vents

## Taglie / Sizes

XS ÷ XXXL Slim Fit

CeXmb™ CeVX

41,80€

Art. 21P02K247

00 Bianco / White

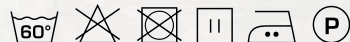
000 Nero / Black

## Tessuto 1 / Fabric 1

100% poliestere  
100% polyester  
86 g / m<sup>2</sup>

## Tessuto 2 / Fabric 2

100% poliestere  
100% polyester  
160 g / m<sup>2</sup>



Art. 21P02K247  
000 Nero / Black

Art. 21P02K247  
00 Bianco / White

# MATTIA

## Dettagli / Details

- 1 tasca
- Taschino sul petto
- Chiusura con zip rovesciata

- 1 pocket
- Breast pocket
- Inverted zip fastening

## Taglie / Sizes

S ÷ 4XL Slim Fit

CeXmb™ CeVX

41,80€

**Art. 21P02K246**

00 Bianco / White

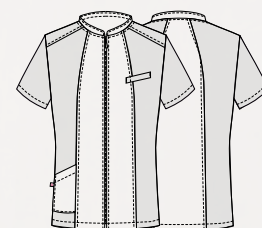
000 Nero / Black

## Tessuto 1 / Fabric 1

100% poliestere  
100% polyester  
86 g / m<sup>2</sup>

## Tessuto 2 / Fabric 2

100% poliestere  
100% polyester  
160 g / m<sup>2</sup>



**Art. 21P02K246**  
00 Bianco / White

**Art. 21P02K246**  
000 Nero / Black

# AFRODITE

## Dettagli / Details

- 2 tasche
- Inseri in rete

- 2 pockets
- Network fabric panels

## Taglie / Sizes

XS ÷ XXXL Slim Fit

CeXmb™ CeVX

40,70€

**Art. 20P02K198**

00 Bianco / White

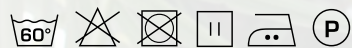
000 Nero / Black

## Tessuto / Fabric

100% poliestere

100% polyester

86 g / m<sup>2</sup>



**Art. 20P02K198**

000 Nero / Black

**Art. 20P02K198**

00 Bianco / White

BIONIC  
FINISH<sup>°C</sup><sub>6</sub>

Fresh &  
Stretch

## ATENA

### Dettagli / Details

- Abbottonatura nascosta con automatici
- 2 tasche
- Inserti in rete

- Concealed buttoning with press studs
- 2 pockets
- Network fabric panels

### Taglie / Sizes

XS ÷ XXXL Slim Fit

CeXmb™ CeVX

45,10€

**Art. 20P02K197**

00 Bianco / White

000 Nero / Black

### Tessuto / Fabric

100% poliestere

100% polyester

86 g / m<sup>2</sup>



**Art. 20P02K197**  
00 Bianco / White

BIONIC  
FINISH<sup>°C</sup><sub>6</sub>

Fresh &  
Stretch



**Art. 20P02K197**  
000 Nero / Black

# CONNOR

## Dettagli / Details

- 2 tasche
- Bottoni a pressione
- Taschino sul petto
- Inserti in rete

- 2 pockets
- Press studs
- Breast pocket
- Network fabric panels

## Taglie / Sizes

S ÷ 4XL Slim Fit

CeXmb™ CeVX

38,50€

**Art. 21P03K238**

00 Bianco / White

000 Nero / Black

## Tessuto 1 / Fabric 1

50% lyocell 50% poliestere

50% lyocell 50% polyester

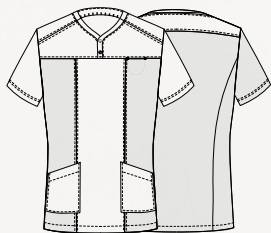
180 g / m<sup>2</sup>

## Tessuto 2 / Fabric 2

100% poliestere

100% polyester

160 g / m<sup>2</sup>



 **Tencel™**

Feels so right

 **Fresh & Stretch**



 **Tencel™**

Feels so right

 **Fresh & Stretch**

**Art. 21P03K238**  
00 Bianco / White

**Art. 21P03K238**  
000 Nero / Black



# CHLOE

## Dettagli / Details

- 2 tasche
- Bottoni a pressione
- Taschino sul petto
- Inserti in rete
- 2 pockets
- Press studs
- Breast pocket
- Network fabric panels

## Taglie / Sizes

XS ÷ XXXL Slim Fit

CeXmb™ CeVX

38,50€

**Art. 21P03K239**

00 Bianco / White

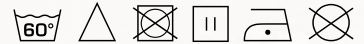
000 Nero / Black

## Tessuto 1 / Fabric 1

50% lyocell 50% poliestere  
50% lyocell 50% polyester  
180 g / m<sup>2</sup>

## Tessuto 2 / Fabric 2

100% poliestere  
100% polyester  
160 g / m<sup>2</sup>



**Art. 21P03K239**  
00 Bianco / White



**Art. 21P03K239**  
000 Nero / Black

# LAPO

## Dettagli / Details

- Bottoni a pressione
- Taschino sul petto - Inserti in rete

- Press studs - Breast pocket
- Network fabric panels

## Taglie / Sizes

S ÷ 4XL Slim Fit

### Art. 19P08G045 *CeXmb* *CeVX*

119 Grigio / Grey 41,80€

#### Tessuto 1 / Fabric 1

100% poliestere / polyester  
160 g / m<sup>2</sup>

#### Tessuto 2 / Fabric 2

50% cotone 50% poliestere  
50% cotton 50% polyester  
180 g / m<sup>2</sup>

### Art. 18P08G045 *CeXmb* *CeVX*

000 Nero / Black 41,80€

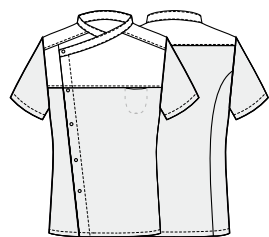
00 Bianco / White

#### Tessuto 1 / Fabric 1

100% poliestere / polyester  
160 g / m<sup>2</sup>

#### Tessuto 2 / Fabric 2

97% cotone 3% elasthan  
97% cotton 3% elastane  
185 g / m<sup>2</sup>



### Art. 19P08G045

119 Grigio / Grey



### Art. 18P08G045

000 Nero / Black



### Art. 18P08G045

00 Bianco / White











# ALINA

**Dettagli / Details**

- Bottoni a pressione
- 1 tasca
- Insetti in rete
- Press studs
- 1 pocket
- Network fabric panels

**Taglie / Sizes**

XS ÷ XXXL Slim Fit

CeXtronic™ CeVX

44€

**Art. 23P02K333**

00 Bianco / White

000 Nero / Black

**Tessuto / Fabric**

97% cotone 3% elasthan  
97% cotton 3% elastane  
185 g / m<sup>2</sup>



**Art. 23P02K333**  
00 Bianco / White



**Art. 23P02K333**  
000 Nero / Black





# ERIKA

**Dettagli / Details**

- 2 tasche
- 1 taschino portapenne
- Rete all'over
- 2 pockets
- 1 pen pocket
- Network fabric all'over

**Taglie / Sizes**

XS ÷ XXXL Slim Fit



Fresh & Stretch

**Art. 21P02K248**  
00 Bianco / White



Fresh & Stretch

**Art. 21P02K248**  
000 Nero / Black

**CeXnmb " " CeVX Art. 21P02K248**  
29,70€ 00 Bianco / White  
000 Nero / Black

**CeXnmb " " CeVX Art. 23P02K248**  
29,70€ 119 Grigio / Grey  
004 Blu / Blue  
102 Verde militare / Military green  
073 Beige / Beige

**Tessuto / Fabric**

100% poliestere  
100% polyester  
160 g / m<sup>2</sup>



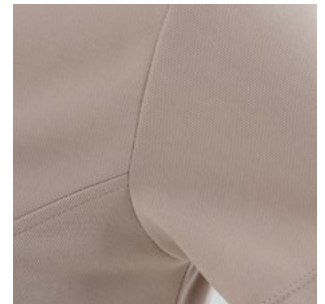
Fresh & Stretch

**Art. 23P02K248**  
119 Grigio / Grey



Fresh & Stretch

**Art. 23P02K248**  
004 Blu / Blue



Fresh & Stretch

**Art. 23P02K248**  
102 Verde militare / Military green



Fresh & Stretch

**Art. 23P02K248**  
073 Beige / Beige



 Fresh &  
Stretch



**Art. 23P02K245**  
000 Nero / Black



Fresh & Stretch

**Art. 23P02K245**  
00 Bianco / White



Fresh & Stretch

**Art. 23P02K245**  
000 Nero / Black



Fresh & Stretch

**Art. 23P02K245**  
119 Grigio / Grey



Fresh & Stretch

**Art. 23P02K245**  
004 Blu / Blue



Fresh & Stretch

**Art. 23P02K245**  
102 Verde militare / Military green



Fresh & Stretch

**Art. 23P02K245**  
073 Beige / Beige

# EROS

## Dettagli / Details

- 2 tasche
- 1 taschino portapenne
- Rete all'over

- 2 pockets
- 1 pen pocket
- Network fabric all'over

## Taglie / Sizes

S ÷ 4XL Slim Fit

CeXmb™ CeVX

29,70€

## Art. 23P02K245

00 Bianco / White

000 Nero / Black

119 Grigio / Grey

004 Blu / Blue

102 Verde militare / Military green

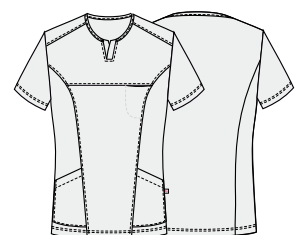
073 Beige / Beige

## Tessuto / Fabric

100% poliestere

100% polyester

160 g / m<sup>2</sup>





sorona®  
AGILE

Art. 23P02P348  
119 Grigio / Grey

PANTALONI UNISEX  
UNISEX PANTS

# TAYLOR

**Dettagli / Details**

- Pantaloni unisex
- 2 tasche davanti
- 2 tasche sul retro
- Elastico e coulisse
- Polsini in rete

- Unisex pants
- 2 front pockets
- 2 rear pockets

- Elasticated waistband with drawstring
- Network fabric cuffs

**Taglie / Sizes**

XS ÷ 4XL Slim Fit

CeXmb " " CeVX

36,30€

**Art. 23P02P348**

00 Bianco / White

000 Nero / Black

119 Grigio / Grey

004 Blu / Blue

102 Verde militare / Military green

073 Beige / Beige

**Tessuto / Fabric**

100% poliestere

100% polyester

108 g / m<sup>2</sup>



**Art. 23P02P348**

00 Bianco / White



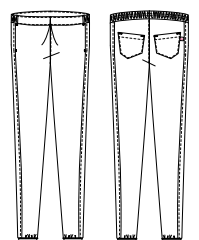
**Art. 23P02P348**

000 Nero / Black



**Art. 23P02P348**

119 Grigio / Grey



**Art. 23P02P348**

004 Blu / Blue



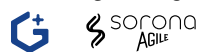
**Art. 23P02P348**

102 Verde militare / Military green



**Art. 23P02P348**

073 Beige / Beige





# ALINA

## Dettagli / Details

- Bottoni a pressione
- 1 tasca
- Inserti in rete

- Press studs
- 1 pocket
- Network fabric panels

## Taglie / Sizes

XS ÷ XXXL Slim Fit

CeXmb " CeVX

44€

**Art. 23P02K252**

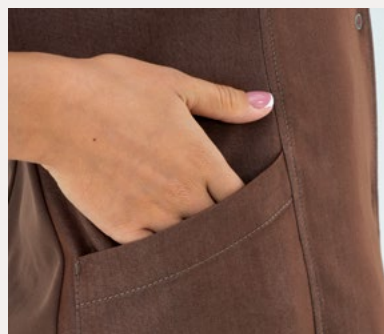
J322 Jeans marrone / Brown jeans

## Tessuto 1 / Fabric 1

70% viscosa 27% poliestere 3% elasthan  
70% viscose 27% polyester 3% elastane  
200 g / m<sup>2</sup>

## Tessuto 2 / Fabric 2

100% poliestere  
100% polyester  
160 g / m<sup>2</sup>



# LAPO

## Dettagli / Details

- Bottoni a pressione
- Taschino sul petto
- Insetti in rete

- Press studs

- Breast pocket

- Network fabric panels

## Taglie / Sizes

S ÷ 4XL Slim Fit

CeXmb " CeWX

44€

## Art. 23P08G251

J322 Jeans marrone / Brown jeans

## Tessuto 1 / Fabric 1

100% poliestere

100% polyester

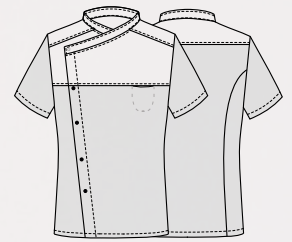
160 g / m<sup>2</sup>

## Tessuto 2 / Fabric 2

70% viscosa 27% poliestere 3% elastan

70% viscose 27% polyester 3% elastane

200 g / m<sup>2</sup>



## health & wellness

Kimono

Kimono

# PAOLA

### Dettagli / Details

- 1 tasca
- 2 spacchetti davanti

- 1 pocket
- 2 front vents

### Taglie / Sizes

XS ÷ XXXL Slim Fit

CeXrmb " " CeVX

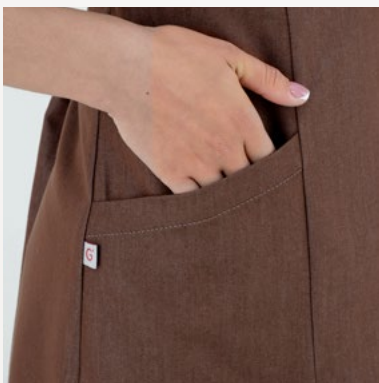
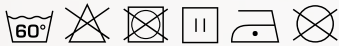
45,10€

### Art. 23P02K255

J322 Jeans marrone / Brown jeans

### Tessuto / Fabric

70% viscosa 27% poliestere 3% elasthan  
70% viscose 27% polyester 3% elastane  
200 g / m<sup>2</sup>



Fresh & Stretch

COMFORT



# ALLEGRA

## Dettagli / Details

- 1 grande tasca
- Coperto dietro
- 2 spacchetti laterali

- 1 big pocket
- Covered backside
- 2 side vents

## Taglie / Sizes

I - II Regular Fit

	I	II
Torace / Chest	80-96 cm	97-121 cm
Bacino / Hips	84-104 cm	105-124 cm

CeXmb " " CeVX

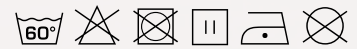
39,60€

**Art. 23P02K340**

J322 Jeans marrone / Brown jeans

## Tessuto / Fabric

70% viscosa 27% poliestere 3% elasthan  
70% viscose 27% polyester 3% elastane  
200 g / m<sup>2</sup>



Fresh & Stretch

COMFORT



## health & wellness

Casacche

Tunics

# LAPO

### Dettagli / Details

- Bottoni a pressione
- Taschino sul petto
- Inserti in rete

- Press studs
- Breast pocket
- Network fabric panels

### Taglie / Sizes

S ÷ 4XL Slim Fit

CeXrnib " CeVIX

44€

**Art. 21P08G251**

J004 Jeans blu / Blue jeans

### Tessuto 1 / Fabric 1

100% poliestere

100% polyester

160 g / m<sup>2</sup>

### Tessuto 2 / Fabric 2

70% viscosa 27% poliestere 3% elastan

70% viscose 27% polyester 3% elastane

200 g / m<sup>2</sup>



**Fresh & Stretch**

**COMFORT**



# ALINA

## Dettagli / Details

- Bottoni a pressione
- 1 tasca
- Insetti in rete

- Press studs

- 1 pocket

- Network fabric panels

## Taglie / Sizes

XS ÷ XXXL Slim Fit

CeXmb " CeWX

44€

**Art. 21P02K252**

J004 Jeans blu / Blue jeans

## Tessuto 1 / Fabric 1

70% viscosa 27% poliestere 3% elasthan  
70% viscose 27% polyester 3% elastane  
200 g / m<sup>2</sup>

## Tessuto 2 / Fabric 2

100% poliestere  
100% polyester  
160 g / m<sup>2</sup>



Fresh & Stretch

COMFORT



## health & wellness

Casacche

Tunics

# EMILY

### Dettagli / Details

- Chiusura con zip rovesciata
- Taschino sul petto
- 2 tasche
- Polsino con elastico
- 2 spacchi laterali

- *Inverted zip fastening*
- *Breast pocket*
- *2 pockets*
- *Cuff with elastic band*
- *2 side vents*

### Taglie / Sizes

XS ÷ XXXL Slim Fit

CeXrmb " " CeVX

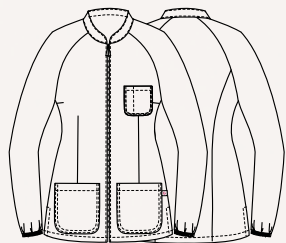
51,70€

**Art. 21P02K259**

J004 Jeans blu / Blue jeans

### Tessuto / Fabric

70% viscosa 27% poliestere 3% elasthan  
70% viscose 27% polyester 3% elastane  
200 g / m<sup>2</sup>



COMFORT



## REMY

### Dettagli / Details

- Chiusura con zip rovesciata
- Taschino sul petto
- 2 tasche
- Polsino con elastico
- Inverted zip fastening
- Breast pocket
- 2 pockets
- Cuff with elastic band

### Taglie / Sizes

S ÷ 4XL Slim Fit

CeXmb " CeVX

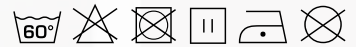
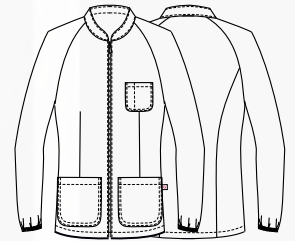
51,70€

**Art. 21P02K260**

J004 Jeans blu / Blue jeans

### Tessuto / Fabric

70% viscosa 27% poliestere 3% elasthan  
70% viscose 27% polyester 3% elastane  
200 g / m<sup>2</sup>





## health & wellness

Casacche

Tunics

# FRENCY

### Dettagli / Details

- 1 tasca
- Bottoni a pressione
- Inserti in rete
- 2 spacchi laterali

- 1 pocket
- Press studs
- Network fabric panels
- 2 side vents

### Taglie / Sizes

XS ÷ XXXL Slim Fit

CeXrmb " " CeVX

41,25€

### Art. 21P02K253

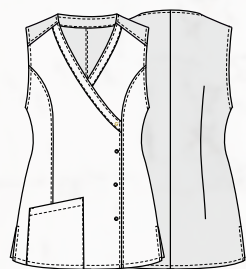
J004 Jeans blu / Blue jeans

### Tessuto 1 / Fabric 1

70% viscosa 27% poliestere 3% elasthan  
70% viscose 27% polyester 3% elastane  
200 g / m<sup>2</sup>

### Tessuto 2 / Fabric 2

100% poliestere  
100% polyester  
160 g / m<sup>2</sup>



Fresh & Stretch

COMFORT



COMFORT



## ROGER

### Dettagli / Details

- Taschino sul petto
- Bottoni a pressione
- 2 spacchetti laterali

- Breast pocket
- Press studs
- 2 side vents

### Taglie / Sizes

S ÷ 4XL Slim fit

CeXrmb " " CeVX

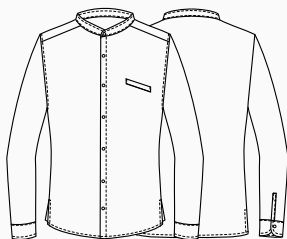
52,80€

**Art. 21P08N254**

J004 Jeans blu / Blue jeans

### Tessuto / Fabric

70% viscosa 27% poliestere 3% elasthan  
70% viscose 27% polyester 3% elastane  
200 g / m<sup>2</sup>



## PAOLA

### Dettagli / Details

- 1 tasca
- 2 spacchetti davanti

- 1 pocket
- 2 front vents

### Taglie / Sizes

XS ÷ XXXL Slim Fit

CeXrmb " " CeVX

45,10€

**Art. 21P02K255**

J004 Jeans blu / Blue jeans

### Tessuto / Fabric

70% viscosa 27% poliestere 3% elasthan  
70% viscose 27% polyester 3% elastane  
200 g / m<sup>2</sup>



 Fresh &  
Stretch

Art. Q2L00219  
C01 Bianco / White

Fresh &  
Stretch



# JEFF

## Dettagli / Details

- Collo e fondo maniche a costine
- Spacchi laterali
- Ricamo manica sinistra (indossata)
- Ribbed collar and bottom sleeves
- Side vents
- Embroidery on the left sleeve (worn)

## Taglie / Sizes

S ÷ 4XL Slim Fit

CeXmb " " CeVX

33€

## Art. Q2L00219

C01 Bianco / White

U32 Nero / Black

Z48 Blu / Blue

## Tessuto / Fabric

100% poliammide

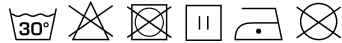
100% polyamide

195 g / m<sup>2</sup>



## Art. Q2L00219

C01 Bianco / White



Fresh &  
Stretch



## Art. Q2L00219

Z48 Blu / Blue



## Art. Q2L00219

U32 Nero / Black



# SUSAN

## Dettagli / Details

- Collo e fondo maniche a costine
- Spacchi laterali
- Ricamo manica sinistra (indossata)

- Ribbed collar and bottom sleeves
- Side vents
- Embroidery on the left sleeve (worn)

## Taglie / Sizes

XS ÷ XXXL Slim Fit

CeXmb " " CeVX

33€

## Art. Q2L00268

C01 Bianco / White

U32 Nero / Black

Z48 Blu / Blue

## Tessuto / Fabric

100% poliammide

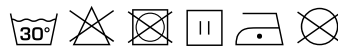
100% polyamide

195 g / m<sup>2</sup>



## Art. Q2L00268

C01 Bianco / White



## Art. Q2L00268

U32 Nero / Black



## Art. Q2L00268

Z48 Blu / Blue





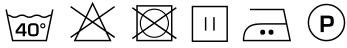
# CARLO

## POLO UOMO

Taglie / Sizes  
XS ÷ XXL

Art. 590 **CeXnmb** **CeVX**  
00 Bianco / White 15,10€  
000 Nero / Black

Tessuto / Fabric  
100% cotone / 100% cotton



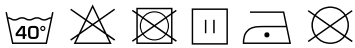
# BILLY

## T-SHIRT

Taglie / Sizes  
XS ÷ XXL

Art. 592 **CeXnmb** **CeVX**  
00 Bianco / White 7,70€

Tessuto / Fabric  
100% cotone / 100% cotton



Art. 592  
00 Bianco / White



Art. 590  
000 Nero / Black

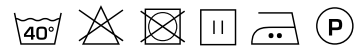
# CARLA

POLO DONNA

Taglie / Sizes  
S ÷ XL

CeXrnmb " CeVX **Art. 602**  
17,60€ 00 Bianco / White  
000 Nero / Black

Tessuto / Fabric  
100% cotone  
100% cotton



**Art. 602**  
000 Nero / Black



# VALERIO

## Dettagli / Details

- 1 tasca
- Taschino sul petto
- Abbottonatura nascosta con automatici
- 2 spacchetti dietro

- 1 pocket
- Breast pocket
- Concealed buttoning with press studs
- 2 rear vents

## Taglie / Sizes

S ÷ 4XL Slim Fit

CeXmb " " CeVX

44€

## Art. 21P02K250

073 Beige / Beige

000 Nero / Black

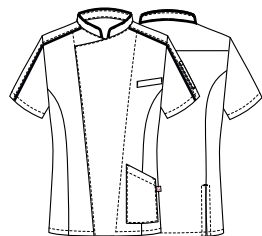
019 Grigio chiaro / Light grey

## Tessuto / Fabric

65% poliestere 35% cotone

65% polyester 35% cotton

113 g / m<sup>2</sup>



ULTRA  
LIGHT

## Art. 21P02K250

073 Beige / Beige



ULTRA  
LIGHT



## Art. 21P02K250

000 Nero / Black



## Art. 21P02K250

019 Grigio chiaro / Light grey



ULTRA  
LIGHT



**Art. 21P02K250**  
019 Grigio chiaro / Light grey

# TANIA

## Dettagli / Details

- 1 tasca
- Taschino sul petto
- Abbottonatura nascosta con automatici
- 2 spacchetti dietro

- 1 pocket
- Breast pocket
- Concealed buttoning with press studs
- 2 rear vents

## Taglie / Sizes

XS ÷ XXXL Slim Fit

CeXrmb " " CeVX

44€

## Art. 21P02K249

073 Beige / Beige

000 Nero / Black

019 Grigio chiaro / Light grey

## Tessuto / Fabric

65% poliestere 35% cotone

65% polyester 35% cotton

113 g / m<sup>2</sup>



ULTRA  
LIGHT

## Art. 21P02K249

073 Beige / Beige



ULTRA  
LIGHT



## Art. 21P02K249

000 Nero / Black



## Art. 21P02K249

019 Grigio chiaro / Light grey



ULTRA  
LIGHT



**Art. 21P02K249**  
019 Grigio chiaro / *Light grey*

## health & wellness

Casacche

Tunics

# FILIPPO

### Dettagli / Details

- Abbottonatura nascosta con automatici
- Taschino sul petto
- 2 spacchetti dietro

- *Concealed buttoning with press studs*
- *Breast pocket*
- *2 rear vents*

### Taglie / Sizes

S ÷ XXXL Slim Fit

CeXrmb™ CeVX

40,70€

**Art. 20P02K203**

016 Tortora / Taupe

119 Grigio / Grey

### Tessuto / Fabric

65% poliestere 35% cotone

65% polyester 35% cotton

115 g / m<sup>2</sup>



ULTRA  
LIGHT



ULTRA  
LIGHT

**Art. 20P02K203**  
119 Grigio / Grey

# CHIARA

## Dettagli / Details

- Abbottonatura nascosta con automatici
- 2 tasche
- 2 spacchetti dietro
- Concealed buttoning with press studs
- 2 pockets
- 2 rear vents

## Taglie / Sizes

XS ÷ XXXL Slim Fit

CeXmb™ CeWX

40,70€

**Art. 20P02K202**

016 Tortora / Taupe

119 Grigio / Grey

## Tessuto / Fabric

65% poliestere 35% cotone  
65% polyester 35% cotton  
115 g / m<sup>2</sup>



ULTRA  
LIGHT



ULTRA  
LIGHT

**Art. 20P02K202**  
119 Grigio / Grey

LUXSATIN



Art. 19P02K124  
006 Bordeaux / Burgundy

LUXSATIN



# MAYA

## Dettagli / Details

- 2 tasche
- Taschino sul petto
- Bottoni a pressione
- 2 spacchetti dietro

- 2 pockets
- Breast pocket
- Press studs
- 2 rear vents

## Taglie / Sizes

XS ÷ XXXL Slim Fit

CeXnmb " CeVX  
55€

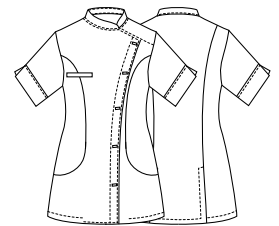
**Art. 19P02K124**  
000 Nero / Black  
006 Bordeaux / Burgundy

CeXnmb " CeVX  
50,60€

**Art. 19P02K075**  
00 Bianco / White

## Tessuto / Fabric

50% cotone 50% poliestere  
50% cotton 50% polyester  
180 g / m<sup>2</sup>



**Art. 19P02K124**  
000 Nero / Black



LUXSATIN



**Art. 19P02K124**  
006 Bordeaux / Burgundy



**Art. 19P02K075**  
00 Bianco / White





# SION

## Dettagli / Details

- 2 tasche
- Abbottonatura nascosta con automatici

- 2 pockets
- Concealed buttoning with press studs

## Taglie / Sizes

XS ÷ XXL Slim Fit

CeXmb " " CeVX

39,60€

**Art. 14P02K458**

00 Bianco / White

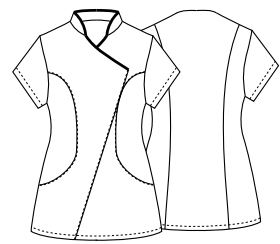
000 Nero / Black

## Tessuto / Fabric

65% poliestere 35% cotone

65% polyester 35% cotton

140 g / m<sup>2</sup>



**Art. 14P02K458**

000 Nero / Black



# MIRKA



## Dettagli / Details

- 2 tasche
- Taschino sul petto
- Abbottonatura nascosta con automatici
- 2 spacchetti dietro

- 2 pockets
- Breast pocket
- Concealed buttoning with press studs
- 2 rear vents

## Taglie / Sizes

XS ÷ XXXL Slim Fit

CeXmb " CeVX

48,40€

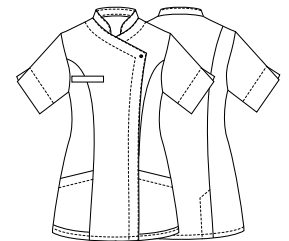
**Art. 16P02K833**

000 Nero / Black

00 Bianco / White

## Tessuto / Fabric

50% lyocell 50% poliestere  
50% lyocell 50% polyester  
180 g / m<sup>2</sup>



**Art. 16P02K833**

00 Bianco / White



# ELEA

## Dettagli / Details

- 2 tasche
- Bottoni a pressione
- Inserti in rete

- 2 pockets
- Press studs
- Network fabric panels

## Taglie / Sizes

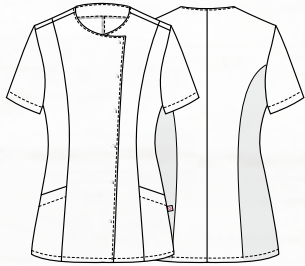
XS ÷ 3XL Slim Fit

**Art. Q2K00230** *CeXnmb* *CeVX*  
C01 Bianco / White 27,50€

**Art. Q2K00231** *CeXnmb* *CeVX*  
U32 Nero / Black 29,70€

## Tessuto / Fabric

65% poliestere 35% cotone  
65% polyester 35% cotton  
143 g / m<sup>2</sup>



**Art. Q2K00231**  
U32 Nero / Black



**Art. Q2K00230**  
C01 Bianco / White

## PINES

**Dettagli / Details**

- 2 tasche  
- Chiusura con zip rovesciata

- 2 pockets  
- Inverted zip fastening

**Taglie / Sizes**

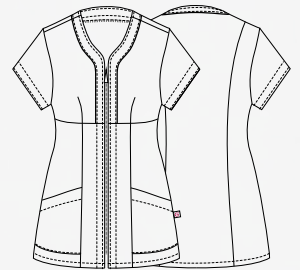
XS ÷ 3XL Slim Fit

CeXnmb " CeVX Art. Q2K00255  
28,60€ C01 Bianco / White

CeXnmb " CeVX Art. Q2K00256  
30,80€ U32 Nero / Black

**Tessuto / Fabric**

65% poliestere 35% cotone  
65% polyester 35% cotton  
143 g / m<sup>2</sup>



Art. Q2K00255  
C01 Bianco / White

Art. Q2K00256  
U32 Nero / Black

# SARA

## Dettagli / Details

- 2 tasche
- Abbottonatura nascosta con automatici

- 2 pockets
- Concealed buttoning with press studs

## Taglie / Sizes

XS ÷ 3XL Slim Fit

**Art. Q2K00236** CeXnmb " " CeVX  
C01 Bianco / White 27,50€

**Art. Q2K00237** CeXnmb " " CeVX  
U32 Nero / Black 27,50€

## Tessuto / Fabric

65% poliestere 35% cotone  
65% polyester 35% cotton  
143 g / m<sup>2</sup>

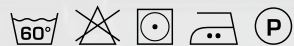


## Art. Q2K00271

C04 Salmone / Salmon  
C08 Azzurro chiaro / Light blue  
M19 Verde acqua / Acqua green

## Tessuto / Fabric

70% poliestere 30% cotone  
70% polyester 30% cotton  
132 g / m<sup>2</sup>



**Art. Q2K00237**  
U32 Nero / Black



**Art. Q2K00236**  
C01 Bianco / *White*



**Art. Q2K00237**  
U32 Nero / *Black*



**Art. Q2K00271**  
C04 Salmone / *Salmon*



**Art. Q2K00271**  
C08 Azzurro chiaro / *Light blue*



**Art. Q2K00271**  
M19 Verde acqua / *Acqua green*

# ILARIA

## Dettagli / Details

- Ampia tasca centrale
- Spacchetti sulle maniche
- 2 spacchetti laterali

- Wide central pocket
- Vents on sleeves
- 2 side vents

## Taglie / Sizes

XS ÷ 3XL Regular Fit

**Art. Q2K00257** CeXnmb™ CeVX  
C01 Bianco / White 24,20€

**Art. Q2K00258** CeXnmb™ CeVX  
U32 Nero / Black 24,20€

## Tessuto / Fabric

65% poliestere 35% cotone  
65% polyester 35% cotton  
143 g / m<sup>2</sup>



**Art. Q2K00257**  
C01 Bianco / White

**Art. Q2K00258**  
U32 Nero / Black





**Art. Q2P00240**  
C01 Bianco / White



**Art. Q2P00241**  
U32 Nero / Black



## CAMERON

### Dettagli / Details

- 2 tasche - 2 tasche sul retro
- Elastico e coulisse

- 2 pockets - 2 rear pockets
- Elasticated waistband with drawstring

### Taglie / Sizes

XS ÷ 3XL Slim Fit

**CeXnmb " " CeVX Art. Q2P00240**  
27,50€ C01 Bianco / White

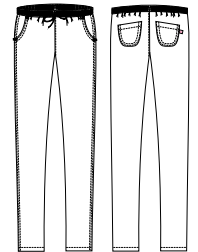
### Tessuto / Fabric

100% cotone  
100% cotton  
185 g / m<sup>2</sup>

**CeXnmb " " CeVX Art. Q2P00241**  
24,20€ U32 Nero / Black

### Tessuto / Fabric

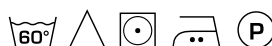
65% poliestere 35% cotone  
65% polyester 35% cotton  
200 g / m<sup>2</sup>



**Art. Q3P00283**  
00 Bianco / White



**Art. Q3P00283**  
000 Nero / Black



## CLEOPATRA

### Dettagli / Details

- 2 tasche - 1 tasca sul retro
- Elastico e coulisse

- 2 pockets - 1 rear pocket
- Elasticated waistband with drawstring

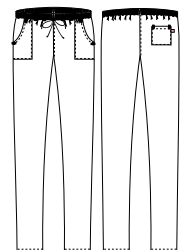
### Taglie / Sizes

XS ÷ XXXL Slim Fit

**Art. Q3P00283**  
C01 Bianco / White  
U32 Nero / Black

### Tessuto / Fabric

65% poliestere 35% cotone  
65% polyester 35% cotton  
143 g / m<sup>2</sup>





## health & wellness

Grembiuli

Aprons

# PICASSO

### Dettagli / Details

- Tela impermeabile
- 2 tasche
- 4 taschini portapenne
- Allacciatura collo regolabile

- *Waterproof canvas*
- *2 pockets*
- *4 pen pockets*
- *Adjustable halter*

### Taglie / Sizes

Taglia unica / One size

CeXrmb " CeVX

48,40€

**Art. 19P01H081**

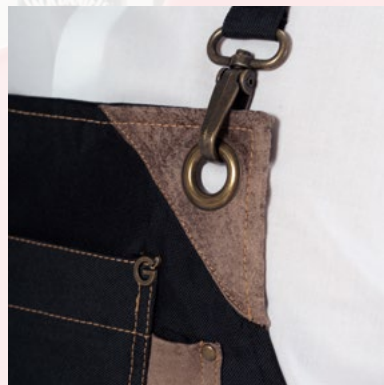
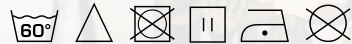
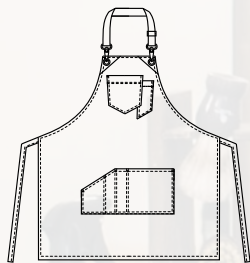
000 Nero / Black

### Tessuto / Fabric

100% poliestere

100% polyester

215 g / m<sup>2</sup>



Diego - Mr. Oldern Barbieria Moderna, Osimo (An)

# GAUGUIN

## Dettagli / Details

- Tela impermeabile
- 3 grandi tasche
- 3 taschini portapenne
- Allacciatura collo regolabile

- *Waterproof canvas*

- *3 big pockets*

- *3 pen pockets*

- *Adjustable halter*

## Taglie / Sizes

Taglia unica / One size

CeXmb " CeVX

52,80€

**Art. 19P01H079**

004 Blu / Blue

## Tessuto 1 / Fabric 1

100% poliestere

100% polyester

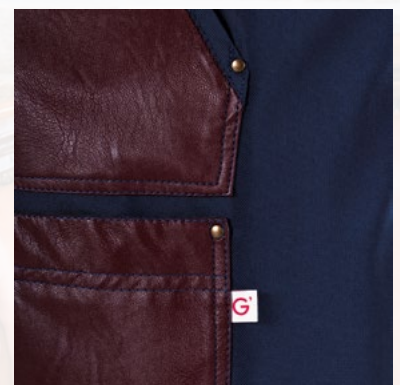
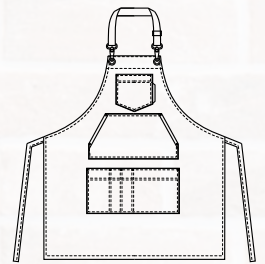
215 g / m<sup>2</sup>

## Tessuto 2 / Fabric 2

55% viscosa 45% poliuretano

55% viscose 45% polyurethane

254 g / m<sup>2</sup>



## health & wellness

Grembiuli

Aprons

# MAGRITTE

### Dettagli / Details

- Tela impermeabile
- 3 grandi tasche
- 3 taschini portapenne
- Allacciatura collo regolabile

- *Waterproof canvas*
- *3 big pockets*
- *3 pen pockets*
- *Adjustable halter*

### Taglie / Sizes

Taglia unica / One size

CeXrmb " CeVX

52,80€

**Art. 19P01H080**

016 Tortora / Taupe

### Tessuto 1 / Fabric 1

100% poliestere

100% polyester

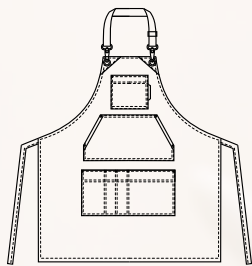
215 g / m<sup>2</sup>

### Tessuto 2 / Fabric 2

55% viscosa 45% poliuretano

55% viscose 45% polyurethane

254 g / m<sup>2</sup>



# SERENA

## Dettagli / Details

- Tela impermeabile
- 1 grande tasca
- 2 taschini portapenne
- Allacciatura collo regolabile
- Coperto dietro

- Waterproof canvas
- 1 big pocket
- 2 pen pockets
- Adjustable halter
- Covered backside

## Taglie / Sizes

Taglia unica / One size

CeXrmb " CeVX

38,50€

**Art. 23P02H337**

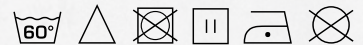
000 Nero / Black

## Tessuto / Fabric

100% poliestere

100% polyester

160 g / m<sup>2</sup>



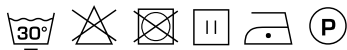
COMFORT



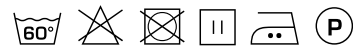
Art. 21P01P241  
000 Nero / Black



**Art. 21P01P241**  
000 Nero / Black



**Art. 21P02P262**  
00 Bianco / White



## REBECCA

### Dettagli / Details

- 2 tasche
- Elastico sul retro

- 2 pockets
- Elasticated waistband on the back

### Taglie / Sizes

XS ÷ XXXL Slim Fit

### Art. 21P01P241

000 Nero / Black

CeXmb™ CeWX

41,80€

### Tessuto / Fabric

70% poliestere 25% viscosa 5% elasthan  
70% polyester 25% viscose 5% elastane  
200 g / m<sup>2</sup>

### Art. 21P02P262

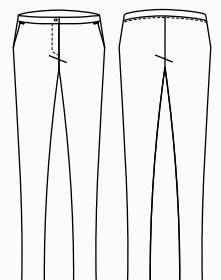
00 Bianco / White

Prezzo / Price

41,80€

### Tessuto / Fabric

62% cotone 35% poliestere 3% elasthan  
62% cotton 35% polyester 3% elastane  
180 g / m<sup>2</sup>





COMFORT

**Art. 20P02P112**  
000 Nero / Black



COMFORT

**Art. 20P02P112**  
00 Bianco / White



COMFORT

**Art. 19P08P112**  
J000 Jeans nero / Black jeans



## IRIDE

### Dettagli / Details

- 2 tasche
- 2 tasche sul retro
- Chiusura zip
- Passanti cintura

- 2 pockets
- 2 rear pockets
- Zip fly
- Belt loops

### Art. 20P02P112 **Prezzo / Price**

000 Nero / Black 44€  
00 Bianco / White

### Tessuto / Fabric

70% cotone 28% poliestere 2% elasthan  
70% cotton 28% polyester 2% elastane  
210 g / m<sup>2</sup>

### Taglie / Sizes

XS ÷ XXXL Slim Fit

### Art. 19P08P112 **Prezzo / Price**

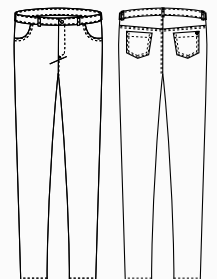
J000 Jeans nero / Black jeans 44€

### Tessuto / Fabric

75% cotone 23% poliestere 2% elasthan  
75% cotton 23% polyester 2% elastane  
210 g / m<sup>2</sup>

### Tessuto / Fabric

XS ÷ 4XL Slim Fit



COMFORT

Art. 20P02P112  
00 Bianco / White



# GEA

**Dettagli / Details**

- Zip laterale

- Lateral zip

**Taglie / Sizes**

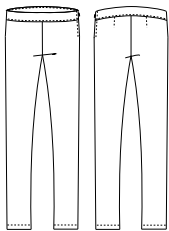
XS ÷ XXXL Slim Fit

**Art. 20P02P214 Prezzo / Price**

00 Bianco / White 36,30€  
000 Nero / Black

**Tessuto / Fabric**

62% cotone 35% poliestere 3% elasthan  
62% cotton 35% polyester 3% elastane  
180 g / m<sup>2</sup>



**Art. 20P02P214**

00 Bianco / White



**Art. 20P02P214**

000 Nero / Black



# LAYLA

**Dettagli / Details**

- Fondo stretto

- 2 Tasche - Chiusura con zip

- Slim leg

- 2 pockets - Zip fly

**Art. 17P01P903 Prezzo / Price**

000 Nero / Black 32,50€

**Tessuto / Fabric**

95% poliestere 5% elasthan  
95% polyester 5% elastane  
220 g / m<sup>2</sup>

**Taglie / Sizes**

XS ÷ XXXL Slim Fit

**Art. 18P02P903 Prezzo / Price**

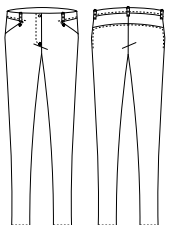
000 Nero / Black 41,80€

**Tessuto / Fabric**

97% cotone 3% elasthan  
97% cotton 3% elastane  
200 g / m<sup>2</sup>

**Taglie / Sizes**

XS ÷ XXL Slim Fit



**Art. 17P01P903**

000 Nero / Black



**Art. 18P02P903**

000 Nero / Black





COMFORT



ULTRA  
LIGHT  
90 GR.

## LEXIE

### Dettagli / Details

- Leggings

- Leggings

### Taglie / Sizes

I - II - III - IV Slim Fit

### Prezzo / Price

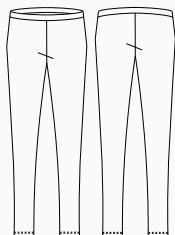
28,10€

### Art. 20P02P210

000 Nero / Black

### Tessuto / Fabric

60% viscosa 35% nylon 5% elasthan  
60% viscose 35% nylon 5% elastane  
250 g / m<sup>2</sup>



## TWIGGY

### Dettagli / Details

- Fondo largo  
- Vita regolare  
- 2 Tasche

- Wide leg  
- Regular waist  
- 2 pockets

### Taglie / Sizes

XS ÷ XXL

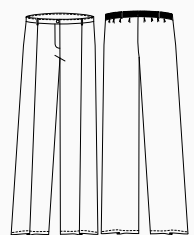
### Art. 18P02P057

000 Nero / Black

Prezzo / Price  
37,40€

### Tessuto / Fabric

100% poliestere  
100% polyester  
90 g / m<sup>2</sup>



# DARKO

## Dettagli / Details

- 2 tasche - 2 tasche sul retro
- 1 tasca sulla gamba
- Chiusura zip - Elastico in vita
- Passanti cintura

- 2 pockets - 2 rear pockets
- 1 leg pocket
- Zip fly - Elasticated waistband
- Belt loops

## Taglie / Sizes

S ÷ 4XL Slim Fit



## Art. 20P08P179 Prezzo / Price

000 Nero / Black 50,60€

## Art. 21P08P179 Prezzo / Price

00 Bianco / White 50,60€

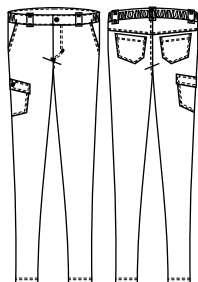
## Tessuto / Fabric

62% cotone 35% poliestere 3% elasthan  
62% cotton 35% polyester 3% elastane  
180 g / m<sup>2</sup>



## Art. 20P08P179

000 Nero / Black





## LOGAN

### Dettagli / Details

- 2 tasche
- 2 tasche sul retro
- Elastico e coulisse
- 2 pockets
- 2 rear pockets
- Elasticated waistband with drawstring

### Taglie / Sizes

XS ÷ 4XL Slim Fit

### Prezzo / Price

47,30€

### Art. 21P03P240

00 Bianco / White  
000 Nero / Black

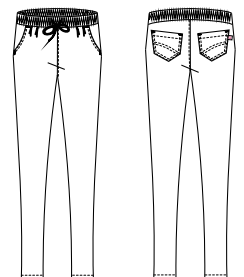
### Tessuto / Fabric

62% cotone 35% poliestere 3% elasthan  
62% cotton 35% polyester 3% elastane  
180 g / m<sup>2</sup>



### Art. 21P03P240

000 Nero / Black





**Art. 20P08P186**  
000 Nero / Black



**Art. 19P02P1532**  
322 Marrone / Brown

## BRUCE

### Dettagli / Details

- 2 tasche
- Elastico e coulisse
- Rete allouer

- 2 pockets
- Elasticated waistband with drawstring
- Network fabric allouer

### Taglie / Sizes

XS ÷ 4XL Slim Fit

### Prezzo / Price

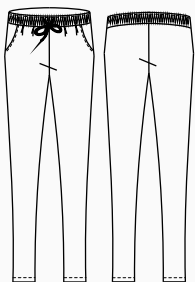
28,600€

**Art. 20P08P186**

000 Nero / Black

### Tessuto / Fabric

100% poliestere  
100% polyester  
160 g / m<sup>2</sup>



## ATENE

### Dettagli / Details

- 2 tasche
- 1 tasca sul retro
- Elastico e coulisse

- 2 pockets
- 1 rear pocket
- Elasticated waistband with drawstring

### Taglie / Sizes

XS ÷ XXXL Regular Fit

### Prezzo / Price

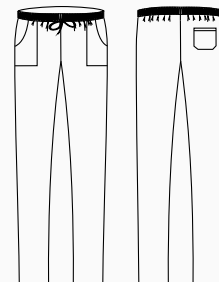
29,70€

**Art. 19P02P1532**

322 Marrone / Brown

### Tessuto / Fabric

70% poliestere 30% cotone  
70% polyester 30% cotton  
132 g / m<sup>2</sup>





ULTRA  
LIGHT

**Art. 20P08P184**  
016 Tortora / Toupe



ULTRA  
LIGHT

**Art. 20P08P184**  
119 Grigio / Grey



COMFORT

**Art. 20P08P185**  
000 Nero / Black

## NOAH

### Dettagli / Details

- 2 tasche
- 1 tasca sul retro
- Elastico e coulisse

- 2 pockets
- 1 rear pocket
- Elasticated waistband with drawstring

### Taglie / Sizes

S ÷ 4XL Slim Fit

### Art. 20P08P184 Prezzo / Price

016 Tortora / Toupe 29,70€  
119 Grigio / Grey

### Tessuto / Fabric

65% poliestere 35% cotone  
65% polyester 35% cotton  
115 g / m<sup>2</sup>

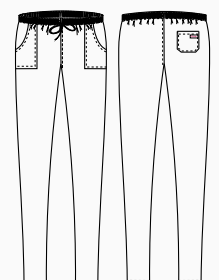


### Art. 20P08P185 Prezzo / Price

000 Nero / Black 31,90€

### Tessuto / Fabric

62% cotone 35% poliestere 3% elastan  
62% cotton 35% polyester 3% elastane  
180 g / m<sup>2</sup>





Fresh & Stretch

COMFORT



COMFORT

## SAUL

### Dettagli / Details

- 2 tasche
- 1 tasca sul retro
- Elastico e coulisse

- 2 pockets
- 1 rear pocket
- Elasticated waistband with drawstring

### Taglie / Sizes

XS ÷ 4XL Slim Fit

### Art. 23P02P256

J322 Jeans marrone / Brown jeans

### Prezzo / Price

38,50€

### Art. 21P02P256

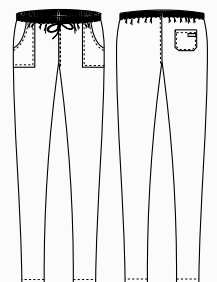
J004 Jeans blu / Blue jeans

### Prezzo / Price

38,50€

### Tessuto / Fabric

70% viscosa 27% poliestere 3% elasthan  
70% viscose 27% polyester 3% elastane  
200 g / m<sup>2</sup>



## ALAN

### Dettagli / Details

- 2 tasche - 1 tasca sul retro
- Elastico e coulisse

- 2 pockets - 1 rear pocket
- Elasticated waistband with drawstring

### Taglie / Sizes

XS ÷ 5XL Slim Fit

### Prezzo / Price

20,90€

### Art. 123

00 Bianco / White

### Prezzo / Price

23,10€

### Art. 125/N

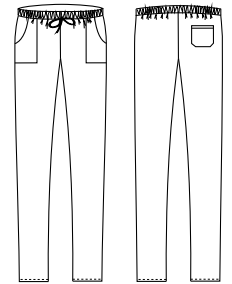
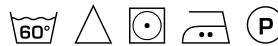
000 Nero / Black



**Art. 123**  
00 Bianco / White  
100% cotone  
100% cotton  
185 g / m<sup>2</sup>



**Art. 125/N**  
000 Nero / Black  
65% poliestere 35% cotone  
65% polyester 35% cotton  
200 g / m<sup>2</sup>



**Art. 15P08P654**  
00 Bianco / White  
97% cotone 3% elastan  
97% cotton 3% elastane  
185 g / m<sup>2</sup>



**Art. 15P08P654**  
000 Nero / Black  
97% cotone 3% elastan  
97% cotton 3% elastane  
185 g / m<sup>2</sup>



## ENOCH

### Dettagli / Details

- 2 tasche - 2 tasche sul retro
- Elastico in vita tergisudore
- Chiusura zip - Passanti cintura
- Inserto in rete traspirante nel cavallo

- 2 pockets - 2 rear pockets
- Elasticated sweatband
- Zip fly - Belt loops
- Network fabric panel in the crotch

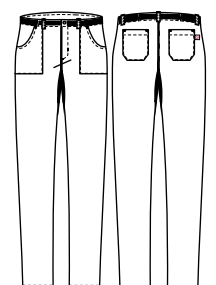
### Taglie / Sizes

XS ÷ 4XL Slim Fit

### Art. 15P08P654

00 Bianco / White

000 Nero / Black







## Lavaggio ad acqua / Water washing

La vaschetta è il simbolo grafico usato per le informazioni relative al lavaggio in acqua.  
The basin is the symbol used for information relating to water washing.

 <p>Lavaggio delicato Gentle wash</p>	 <p>Lavaggio 30° / 40° / 60° / 95°. Wash 30° / 40° / 60° / 95°.</p>	 <p>Lavaggio a mano con temperatura massima di 40°. Il capo non deve essere strizzato. The garment must be hand-washed, the temperature must not exceed 40°C. The garment must not be wrung.</p>	 <p>Non lavare. Do not wash.</p>
--	--	---	---






## Candeggio / Bleaching

Il triangolo è il simbolo del candeggio al cloro.  
The triangle is the chlorine bleaching symbol.

 <p>È permesso l'uso di qualsiasi candeggiante diluito al 3%. It is allowed the use of any bleach diluted to 3%.</p>	 <p>Non candeggiare. Do not bleach.</p>
---	--

## Stiratura / Ironing

Il ferro da stiro è il simbolo relativo alle informazioni sulla stiratura. La temperatura ideale per ogni capo è indicata da punti neri riportati sul ferro.  
The iron is the symbol used for information relating to ironing. The black dots indicate the suitable temperature.

 <p>Stiro temperatura massima 200° Max ironing temperature 200°</p>	 <p>Stiro temperatura massima 150° Max ironing temperature 150°</p>	 <p>Stiro temperatura massima 110° Max ironing temperature 110°</p>	 <p>Non stirare. Do not iron.</p>	 <p>Non stirare a vapore. Do not steam iron.</p>
--	--	--	--	---

## Lavaggio a secco / Dry cleaning

Il cerchio è il simbolo grafico relativo al lavaggio a secco e i segni riportati all'interno indicano il tipo di solvente adatto al tessuto.  
The circle is the dry-cleaning symbol and the signs on the inside indicate the suitable solvent-type.

 <p>Lavare a secco con qualsiasi solvente. Dry clean using any solvent.</p>	 <p>Lavaggio delicato a secco con qualsiasi solvente. Gentle dry clean using any solvent.</p>	 <p>Non lavare a secco. Do not dry clean.</p>
--	--	--

## Asciugatura / Drying

I simboli dell'asciugatura sono rappresentati da un quadrato.  
The drying symbols are represented by a square.

 <p>Asciugare a tamburo a bassa temperatura. Tumble dry low temperature.</p>	 <p>Non asciugare a tamburo. Do not tumble dry.</p>	 <p>Asciugatura verticale senza spremitura. Vertical drying without squeezing.</p>
---	--	---

## CONSIGLI TECNICI / TECHNICAL ADVICES

Per una buona durata dei capi sono consigliabili i seguenti accorgimenti.  
For a well wearing of the clothes please read the following suggestions.

<b>1</b>	Lavare i capi in acqua tiepida per almeno due volte prima di procedere con modifiche sartoriali.	<i>Wash the clothes in lukewarm water at least for two times before proceeding with sartorial changes.</i>
<b>2</b>	Non lasciare i capi in ammollo.	<i>Never leave to soak.</i>
<b>3</b>	Non é consigliabile usare prodotti chimici e in caso di necessità usare una modica quantità di candeggina (proporzione massima del 3%) solo su tessuti tinti in filo o color bianco. La ditta Giblor's si esonera da responsabilità per scolorimenti o usure dei tessuti, causati dall'uso improprio di eventuali prodotti chimici.	<i>If necessary, use a little quantity of bleach (maximum proportion of 3%) only for white and yarn dyed fabrics. Giblor's is not responsible for the fading or wear of the fabrics, due to an inappropriate use of chemical product.</i>
<b>4</b>	Per gli stampati non strofinare né spazzolare.	<i>For printed clothes do not rub and do not brush.</i>
<b>5</b>	Il puro cotone prevede un ritiro del 3% massimo.	<i>Pure cotton will have a shrinkage of max 3%.</i>
<b>6</b>	Per lo stiro attenersi alle basse temperature per i tessuti misti e sintetici; per il cotone, invece potranno essere usate temperature più elevate.	<i>How to iron: for the mixed and synthetic clothes use low temperature; for the cotton you can use higher temperature.</i>
<b>7</b>	Mai procedere a smacchiature locali, pena il deterioramento dei tessuti.	<i>In order to avoid the deterioration of the fabrics, don't remove stains locally.</i>
<b>8</b>	I capi muniti di chiusura lampo vanno allacciati completamente prima del lavaggio in lavatrice.	<i>Zip up all the clothes before washing them in the washing machine.</i>
<b>9</b>	Non porre mai a contatto la chiusura lampo con fonti di calore.	<i>Never place the zip in contact with heat sources.</i>

**Giblor's** presenta una selezione di calzature pensate per completare le collezioni per i settori

## **Chef Style, Ho.re.ca. & services e Health & Wellness,**

di cui l'azienda carpigiana è uno dei principali produttori a livello mondiale.

Comfort e design sono i punti di forza delle calzature proposte in questo catalogo, realizzate nel rispetto di tutte le normative di sicurezza e salute della persona, ed il cui vasto assortimento assicura una perfetta coordinabilità con i capi dell'intera gamma **Giblor's**.

Vi invitiamo a visitare il nostro sito all'indirizzo [www.giblors.com](http://www.giblors.com) o farci visita in uno dei nostri numerosi punti vendita, per visionare l'intera collezione di abbigliamento professionale.

**Giblor's** distribuisce a titolo esclusivo per l'Italia il marchio **DIAN**, azienda leader nel settore manifatturiero delle calzature da lavoro, con **oltre 30 anni di esperienza** alle spalle.

Grazie ai costanti investimenti in ricerca, **DIAN** ha raggiunto un prodotto di qualità eccellente, con l'obiettivo di offrire praticità, comfort e sicurezza sul posto di lavoro.

Le calzature **DIAN** sono conformi alle norme EN-ISO-20347 : 2012 (e aggiornamento 2022) ed ENISO-20345 : 2011, il che garantisce prodotti di design, qualità ed eccellenza produttiva nel settore calzaturiero.

**Giblor's** presents a selection of footwear designed to complete the collections for the

## **Chef Style, Ho.re.ca. & services**

*and Health & Wellness sectors, of which the company from Carpi is one of the main producers in the world.*

*Comfort and design are the strengths of the footwear proposed in this catalogue, made in compliance with all the safety and health regulations of the person, and whose wide range ensures perfect coordination with the garments of the entire **Giblor's** range.*

*We invite you to visit our website at [www.giblors.com](http://www.giblors.com) or visit us at one of our many sales points, to view the entire professional clothing collection.*

**Giblor's** distributes, exclusively for Italy, the **DIAN** brand, a leading company in the manufacturing of work shoes, with **over 30 years of experience** behind it.

*Thanks to the constant investment in research, **DIAN** has achieved an excellent quality product, with the goal of offering convenience, comfort and safety in the workplace.*

***DIAN** footwear complies with the EN-ISO-20347: 2012 (and its 2022 update) and ENISO-20345: 2011 standards, which guarantees products of design, quality and production excellence in the footwear industry.*

